



**PROFESSIONAL 4-WHEEL  
TRACTORS (G SERIES)  
ILLUSTRATED PARTS LIST**

FORM NO: 43791 (6-87)  
REVISED 10-87

PART NO: 43777, 43778, 43779,  
43780, 43781, 43782

PRINTED IN USA  
\$5.00

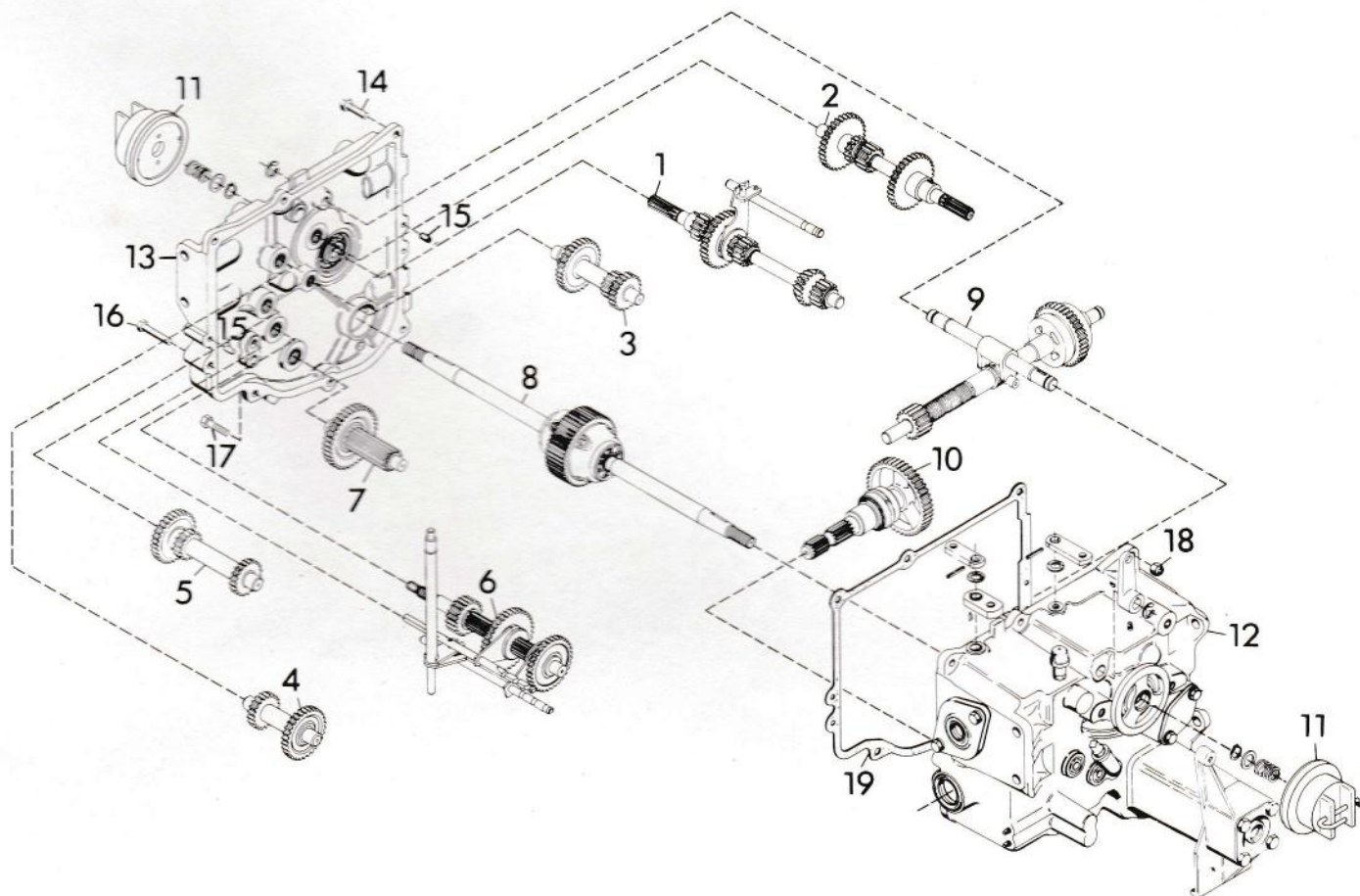
TO CONTINUE ITS PROGRAM OF QUALITY AND DESIGN IMPROVEMENTS, THE MANUFACTURER RESERVES THE RIGHT TO CHANGE SPECIFICATIONS, DESIGNS AND PRICES WITHOUT NOTICE AND WITHOUT INCURRING OBLIGATION. THE MANUFACTURER ALSO RESERVES THE RIGHT TO SHIP WITHOUT NOTICE AND WITHOUT INCURRING OBLIGATION.

 **GRAVELLY**<sup>®</sup>

## TABLE OF CONTENTS

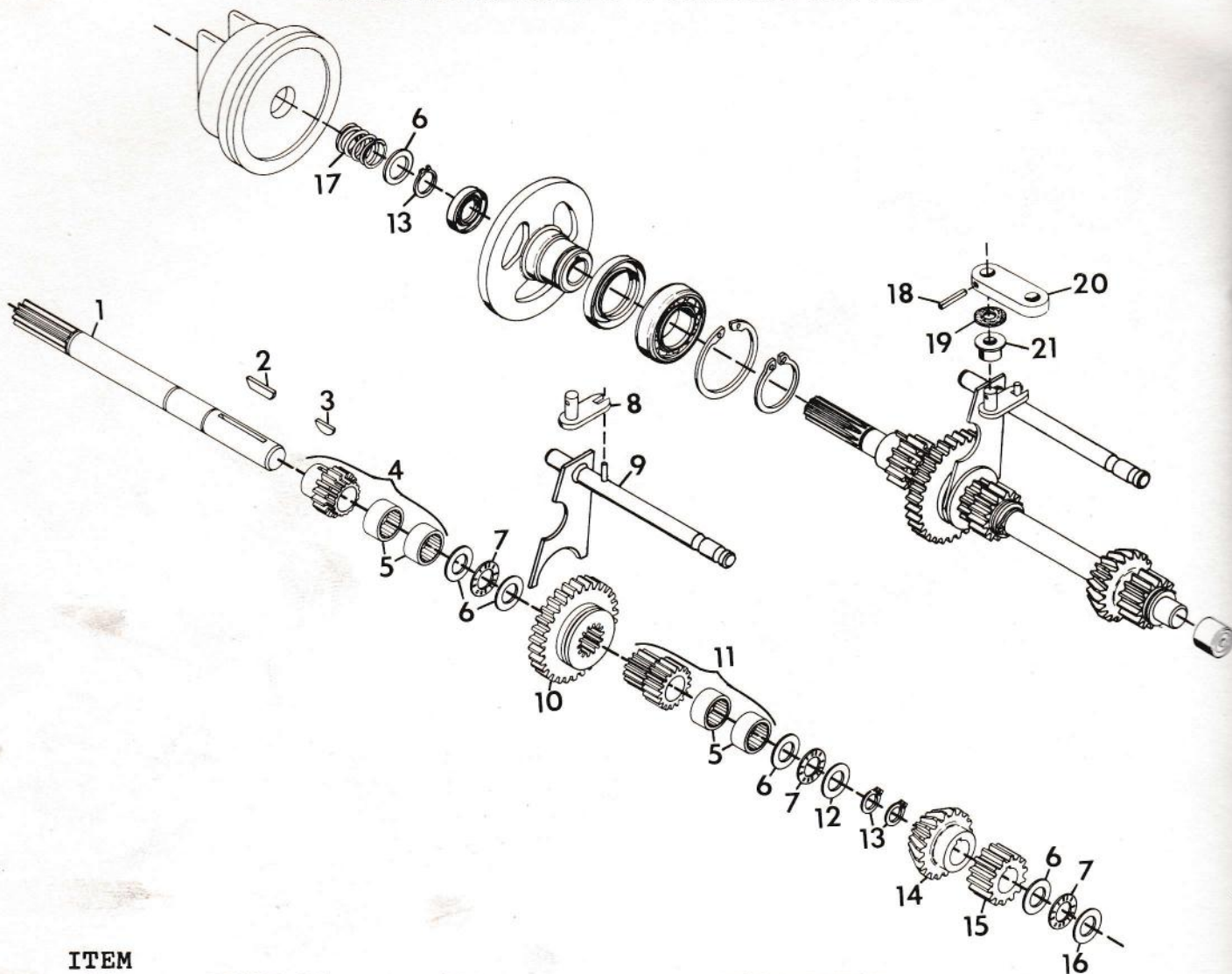
	<u>Page</u>
Transmission . . . . .	1
Number One Shaft - Forward Clutch . . . . .	2
Number Two Shaft - Reverse Clutch . . . . .	3
Number Three Shaft - 3rd and 4th Gear . . . . .	4
Number Four Shaft - Idler . . . . .	4
Number Five Shaft - 1st and 2nd Gear . . . . .	4
Number Six Shaft - Brake/Sliding Gear . . . . .	6
Number Seven Shaft - Pinion/Final Drive . . . . .	8
Number Eight Shaft - Differential Assembly . . . . .	8
Number Nine Shaft - PTO Clutch . . . . .	10
Number Ten Shaft - PTO Drive Assembly . . . . .	12
Number Eleven - Fwd-Rev Clutch Assembly . . . . .	12
Number Twelve - Transmission Case Assembly . . . . .	14
Number Thirteen - Transmission Cover Assembly . . . . .	16
Frame . . . . .	18
Hood and Rear Deck . . . . .	20
Rear Hitch . . . . .	23
Hydraulic System . . . . .	24
Manual Lift . . . . .	26
Steering - 12 H.P. and 16 H.P. Units . . . . .	28
- 18 H.P. and 20 H.P. Units . . . . .	30
Direction Control . . . . .	32
Transmission Controls . . . . .	34
Brake Linkage . . . . .	35
Fuel and Exhaust System - 12 H.P. Units . . . . .	36
- 16 H.P. Units . . . . .	38
- 18 H.P. and 20 H.P. Units . . . . .	40
Electrical System - 12 H.P. Units . . . . .	42
- 16 H.P. Units . . . . .	44
- 18 H.P. and 20 H.P. Units . . . . .	46
Front and Rear Wheels . . . . .	48

# TRANSMISSION



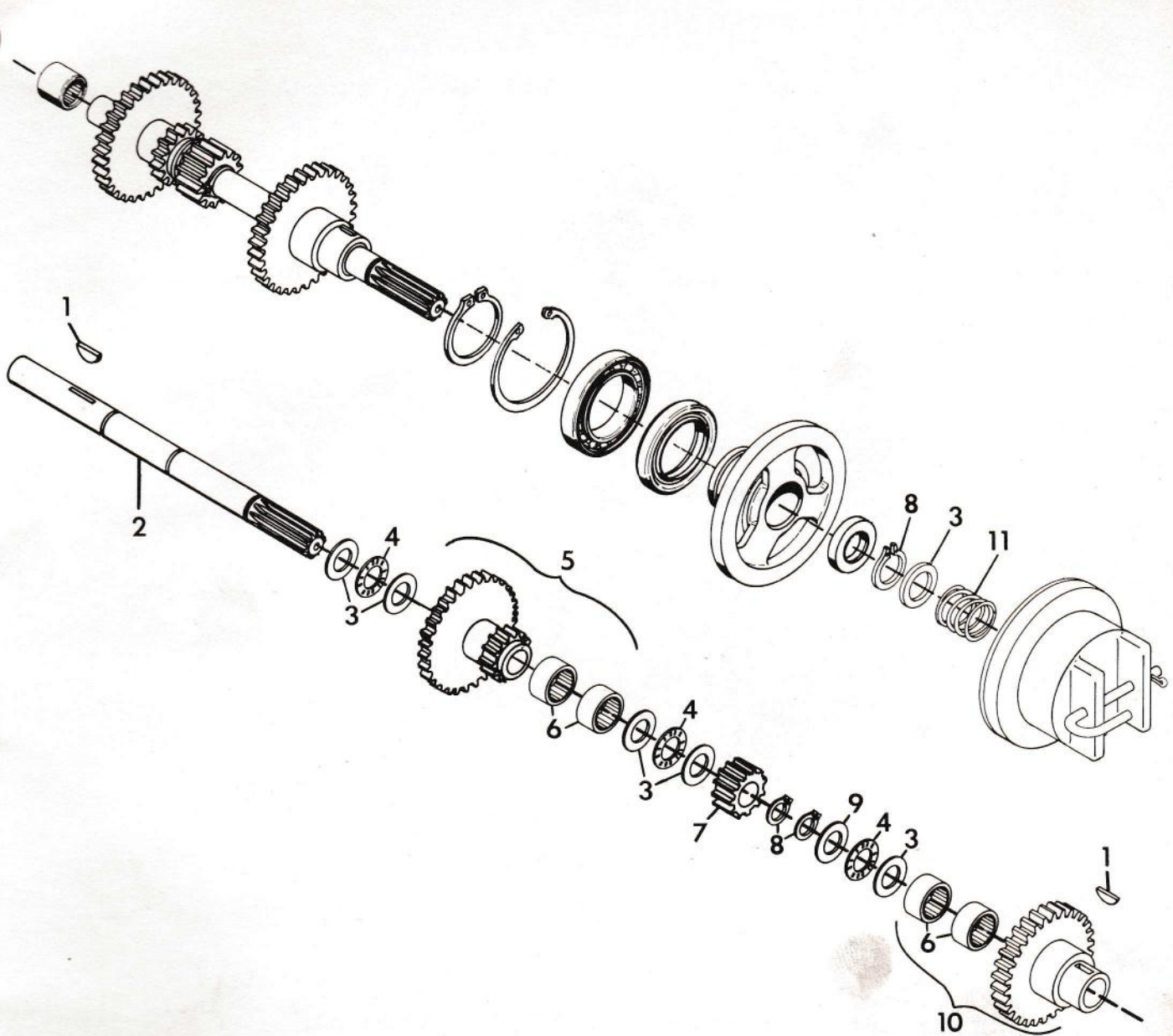
ITEM NO.	PART NO.	QTY.	DESCRIPTION
1			Number 1 Shaft, Forward Clutch
2			Number 2 Shaft, Reverse Clutch
3			Number 3 Shaft, 3rd and 4th Gear
4			Number 4 Shaft, Idler
5			Number 5 Shaft, 1st and 2nd Gear
6			Number 6 Shaft, Brake-Sliding Gear
7			Number 7 Shaft, Pinion-Final Drive
8			Number 8 Shaft, Differential Asm.
9			Number 9 Shaft, PTO Clutch Arm
10			Number 10 Shaft, PTO Drive Asm.
11			Number 11, Fwd-Rev Clutch Asm.
12			Number 12, Transmission Case Asm.
13			Number 13, Transmission Cover Asm.
14	180130	2	Bolt, Hex 3/8-16x2.00
15	18089	2	Pin, Dowel .375x.625
16	180132	2	Bolt, Hex 3/8-16x2.25
17	180126	4	Bolt, Hex 3/8-16x1.50
18	456004	6	Nut, Lock 3/8-16
19	18027	1	Gasket, Transmission Cover

## NUMBER ONE SHAFT - FORWARD CLUTCH



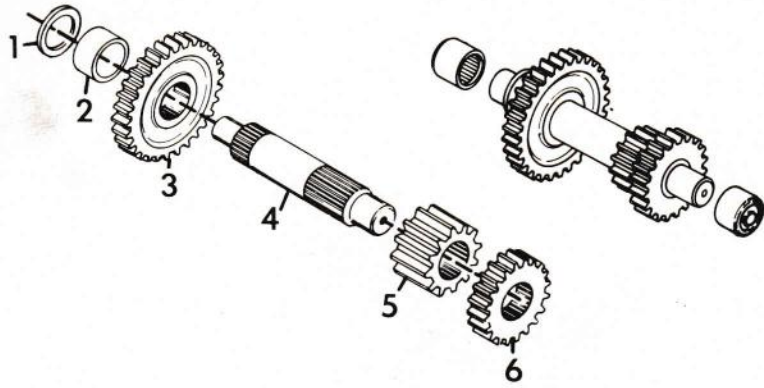
ITEM NO.	PART NO.	QTY.	DESCRIPTION
1	34731	1	Shaft, Splined Fwd Clutch
2	117989	1	Key, Woodruff .188x1.25 Hard #19
3	431787	1	Key, Woodruff .188x.625 Hard #61
4	18025	1	Gear and Bearing Assembly
5	17949	4	Bearing, Needle .75x1x.50
6	11223	5	Race, Bearing Thrust .752x1.240x.030
7	6741	3	Bearing, Thrust .752x1.240x.078
8	17926	1	Weldment, Shifter
9	20755	1	Weldment, Shift Rail
10	18011	1	Gear, Spur
11	18007	1	Gear and Bearing Assembly
12	6742	1	Race, .060 Bearing Thrust
13	11135	3	Ring, Retaining .750 Shaft
14	18006	1	Gear, Bevel
15	18003	1	Gear, 10 DP 16 Teeth x .750 Std.
16	14998	1	Race, Thrust .752x1.240x.095
17	20444	1	Spring, Comp. 1.0x.80x36 lb/in
18	421202	1	Pin, Spring .188x1.00
19	21141	1	Washer, Felt
20	17929	1	Arm, Shifter
21	17925	1	Bushing, 2-Speed

## NUMBER TWO SHAFT - REVERSE CLUTCH

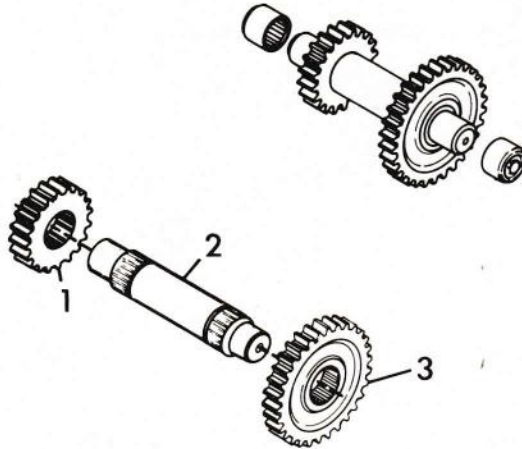


ITEM NO.	PART NO.	QTY.	DESCRIPTION
1	431787	2	Key, Woodruff .188x.625 Hard #61
2	34730	1	Shaft, Splined Reverse Clutch
3	11223	6	Race, Bearing Thrust .752x1.240x.030
4	6741	3	Bearing, Needle .752x1.240x.078
5	18020	1	Gear, Idler Assembly
6	17949	4	Bearing, Needle .75x1x.50
7	18003	1	Gear, 10 DP 16 Teeth x .750 Std.
8	11135	3	Ring, Retaining .750 Shaft
9	6742	1	Race, .060 Bearing Thrust
10	17947	1	Assembly, Reverse Gear and Bearing
11	20444	1	Spring, Comp. 1.0x.80x36 lb/in

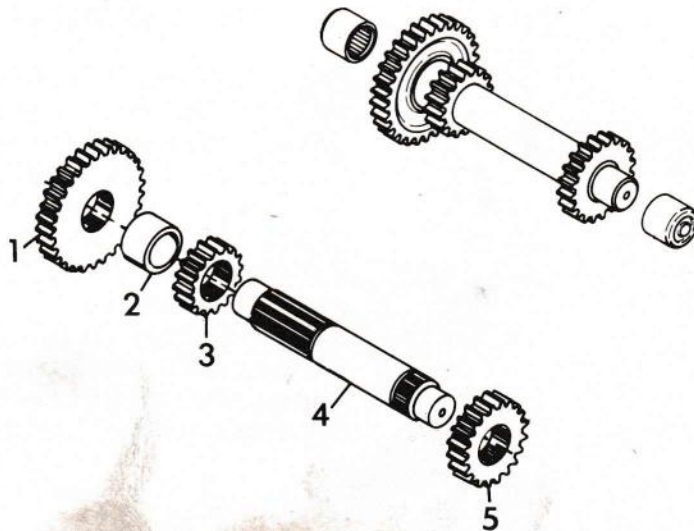
**NUMBER THREE SHAFT - 3RD AND 4TH GEAR**



**NUMBER FOUR SHAFT - IDLER**



**NUMBER FIVE SHAFT - 1ST AND 2ND GEAR**



### NUMBER THREE SHAFT - 3RD AND 4TH GEAR

ITEM NO.	PART NO.	QTY.	DESCRIPTION
1	18000	1	Bearing, Thrust Race
2	17999	1	Spacer, 1.027x1.125x.457
3	19535	1	Gear
4	17997	1	Shaft, Splined
5	17992	1	Gear, 10 DP 16 Teeth x .750
6	15118	1	Gear, 10 DP 20 Teeth x .600

### NUMBER FOUR SHAFT - IDLER

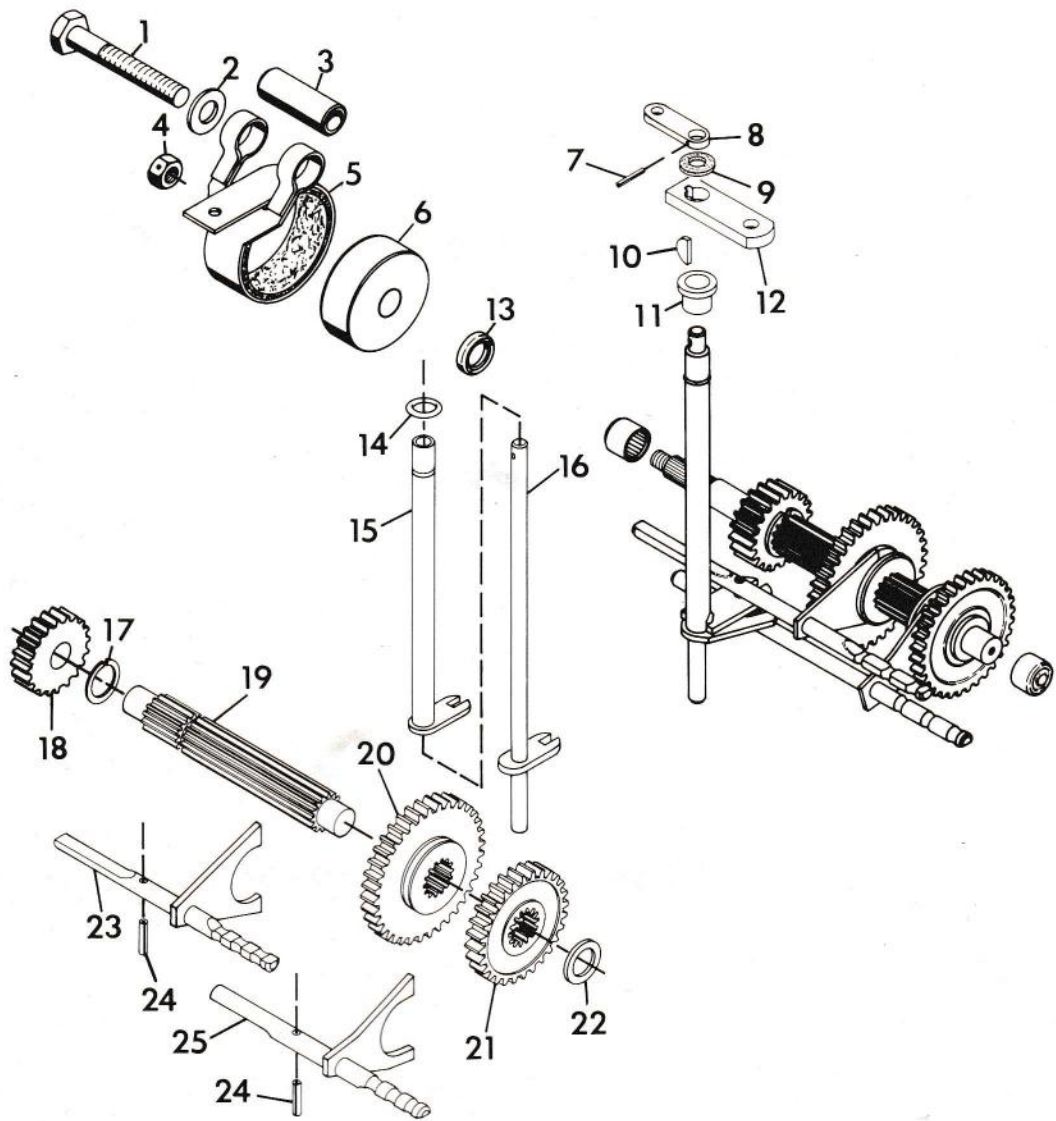
ITEM NO.	PART NO.	QTY.	DESCRIPTION
1	15118	1	Gear, 10 DP 20 Teeth x .600
2	17995	1	Shaft, Splined
3	15115	1	Gear, 10 DP 30 Teeth x .500

### NUMBER FIVE SHAFT - 1ST AND 2ND GEAR

ITEM NO.	PART NO.	QTY.	DESCRIPTION
1	15115	1	Gear, 10 DP 30 Teeth x .500
2	17993	1	Spacer, 1.027x1.125x.550
3	17992	1	Gear, 10 DP 16 Teeth x .750
4	17989	1	Shaft, Splined
5	15118	1	Gear, 10 DP 20 Teeth x .600



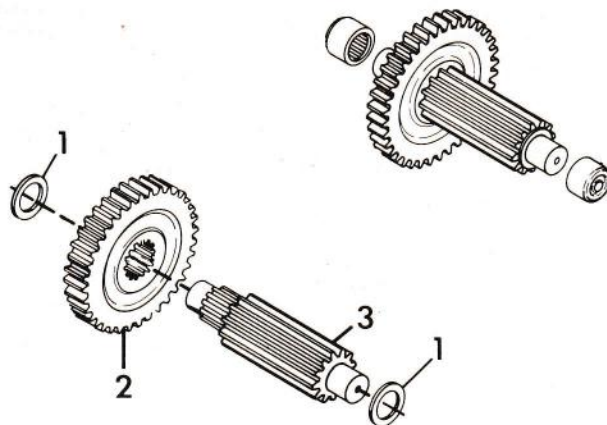
# NUMBER SIX SHAFT - BRAKE/SLIDING GEAR



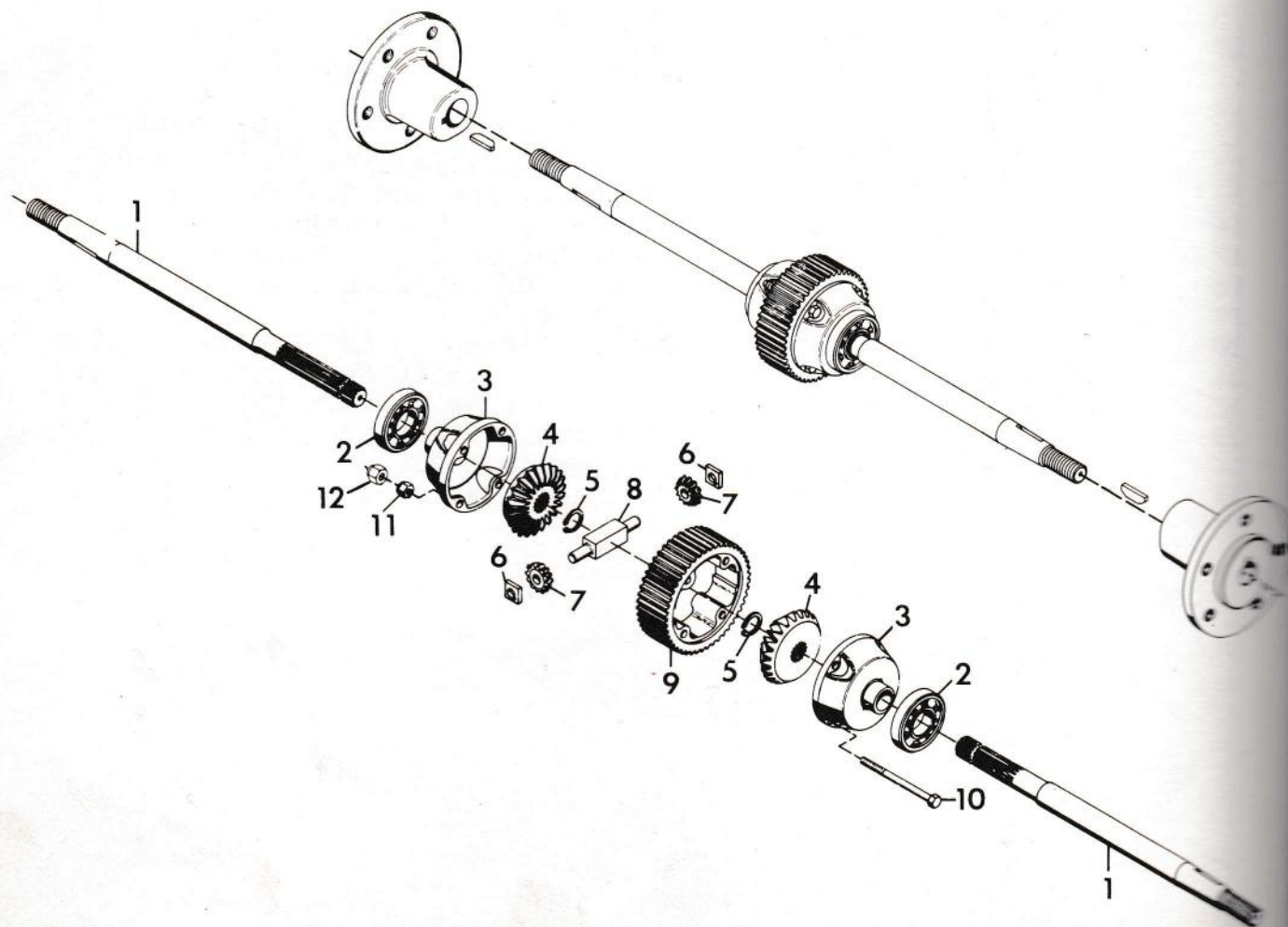
## NUMBER SIX SHAFT - BRAKE/SLIDING GEAR

ITEM NO.	PART NO.	QTY.	DESCRIPTION
1	180188	1	Bolt, Hex 1/2-13x2.75
2	120396	1	Washer, Flat .531x1.062x.095
3	18165	1	Bushing, .530x.750x2.06
4	414075	1	Nut, Lock 5/8-11
5	40732	1	Assembly, Brake Band
6	21371	1	Drum, Brake
7	421202	1	Pin, Spring .188x1.000
8	17945	1	Arm, Shifter
9	21141	1	Washer, Felt (Special for Trans.)
10	271089	1	Key, Woodruff .125x.375 Hard
11	17943	1	Bushing, .756x1.125x.75
12	17944	1	Arm, Shifter
13	15137	1	Seal, Oil .750x1.254x.188
14	18018	1	O-Ring, 5/8x3/4x1/16
15	17940	1	Weldment, 1st and 3rd Shifter
16	17937	1	Weldment, 2nd and 4th Shifter
17	14987	1	Ring, Retaining 1.00 Shaft
18	14988	1	Gear, 8 DP 16 Teeth x .850
19	21370	1	Shaft, Slide Gear
20	14989	1	Gear, Sliding 10 DP 36 Teeth x .594
21	14995	1	Gear, Sliding 10 DP 30 Teeth x .594
22	14998	1	Race, Bearing Thrust .752x1.240x.095
23	20761	1	Weldment, Rail Shift Fork 1&3 Range
24	456390	2	Pin, Spring .25x.75
25	20762	1	Weldment, Rail Shift Fork 2&4 Range

### NUMBER SEVEN SHAFT - PINION/FINAL DRIVE



### NUMBER EIGHT SHAFT - DIFFERENTIAL ASSEMBLY



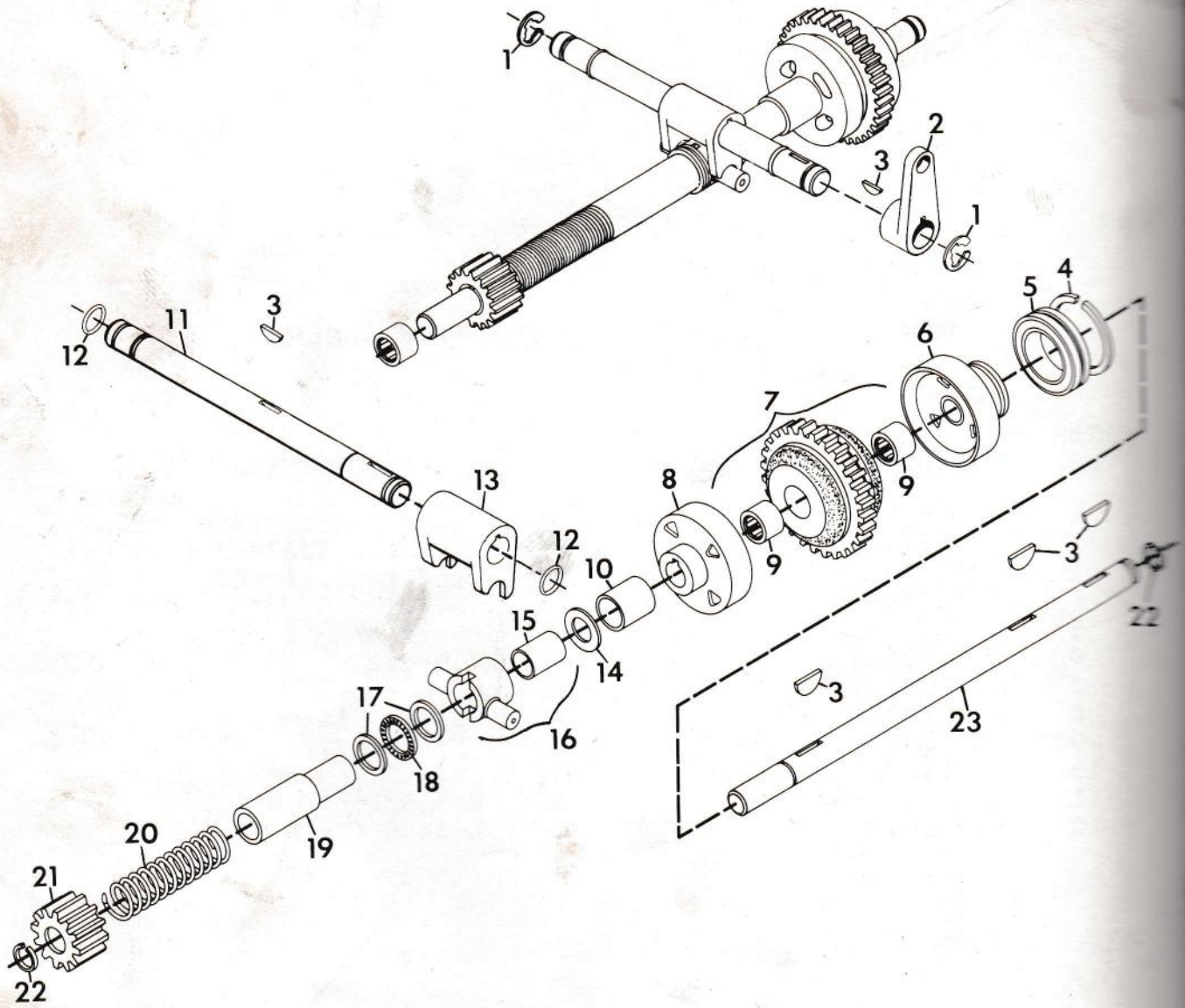
### NUMBER SEVEN SHAFT - PINION/FINAL DRIVE

ITEM NO.	PART NO.	QTY.	DESCRIPTION
1	19340	2	Race, Bearing Thrust 1.002x1.552x.030
2	17987	1	Gear, 8 DP 30 Teeth x .750
3	17986	1	Pinion, Final Drive

### NUMBER EIGHT SHAFT - DIFFERENTIAL ASSEMBLY

ITEM NO.	PART NO.	QTY.	DESCRIPTION
1	40300	2	Axle, Bevel Gear Differential
2	17984	2	Bearing, Ball 1.378x2.834x.669
3	19956	2	Cap, Differential End
4	19953	2	Gear, Bevel
5	17980	2	Ring, Retaining 1.000 Shaft
6	12667	2	Block, Drive
7	19952	2	Pinion, Bevel
8	19954	1	Pin, Spider Pinion
9	23531	1	Gear, Final Drive
10	23712	4	Bolt, Hex 5/16-18x2.75 Grade-8
11	20514	4	Nut, Hex 5/16-18 Grade-8
12	419455	4	Nut, Lock 5/16-18

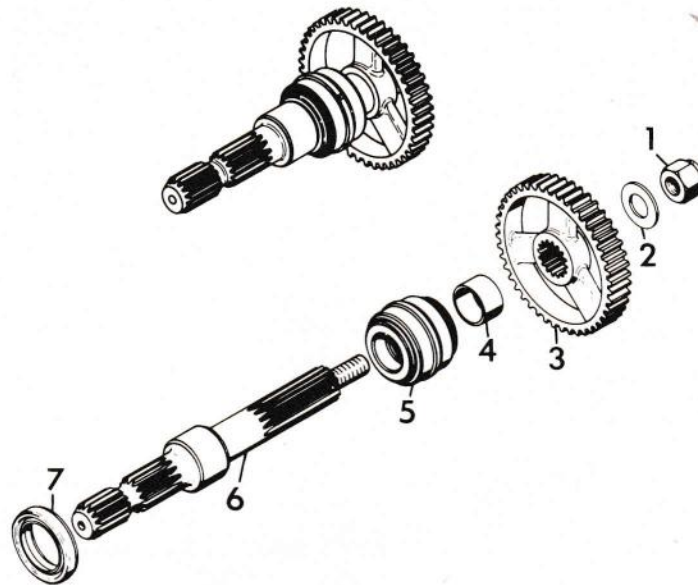
# NUMBER NINE SHAFT - PTO CLUTCH



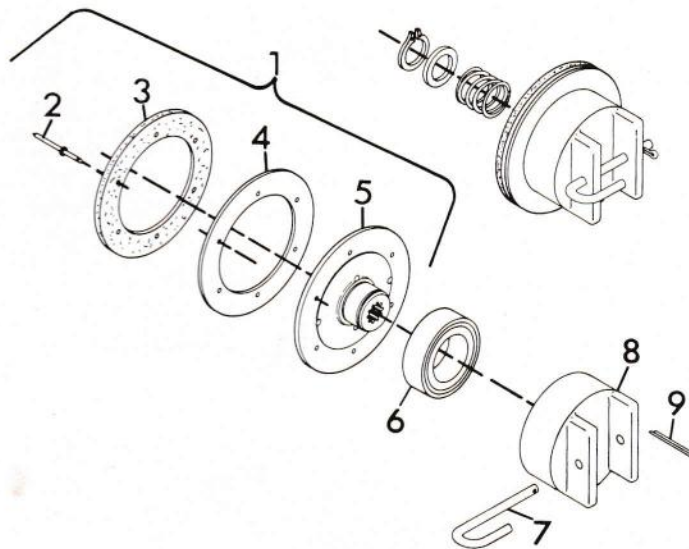
## NUMBER NINE SHAFT - PTO CLUTCH

ITEM NO.	PART NO.	QTY.	DESCRIPTION
1	11270	2	E-Ring, .750 Shaft
2	18019	1	Lever, PTO
3	124549	5	Key, Woodruff .187x.750 Hard #9
4	17966	1	Ring, Retaining 1.375 Eaton 340-1
5	17967	1	Bearing, Ball 1.378x2.440x.551
6	17952	1	Cup, Clutch
7	17953	1	Assembly, Clutch Cone Bearing
8	17957	1	Cup, Clutch
9	17949	2	Bearing, Needle .750x1.00x.50
10	17958	1	Spacer, PTO
11	18017	1	Shaft, PTO Yoke
12	18018	2	O-Ring, .625x.750x.060
13	18016	1	Yoke, PTO
14	14998	1	Race, Thrust Bearing .752x1.240x.095
15	17962	1	Bushing
16	17960	1	Assembly, Shifting Collar
17	17959	2	Bearing, Thrust Race 1.002x1.552x.093
18	11225	1	Bearing, Needle Thrust 1.002x1.552
19	34194	1	Throw-Out, PTO
20	34193	1	Spring, Comp. Type 5x1.50x200 Rate
21	17965	1	Gear, Spur PTO 10 DP 22 Teeth x 1.200 Std.
22	15733	2	Ring, Retaining .750 Shaft
23	17951	1	Shaft, PTO Clutch

### NUMBER TEN SHAFT - PTO DRIVE ASSEMBLY



### NUMBER ELEVEN - FWD-REV CLUTCH ASSEMBLY



### NUMBER TEN SHAFT - PTO DRIVE ASSEMBLY

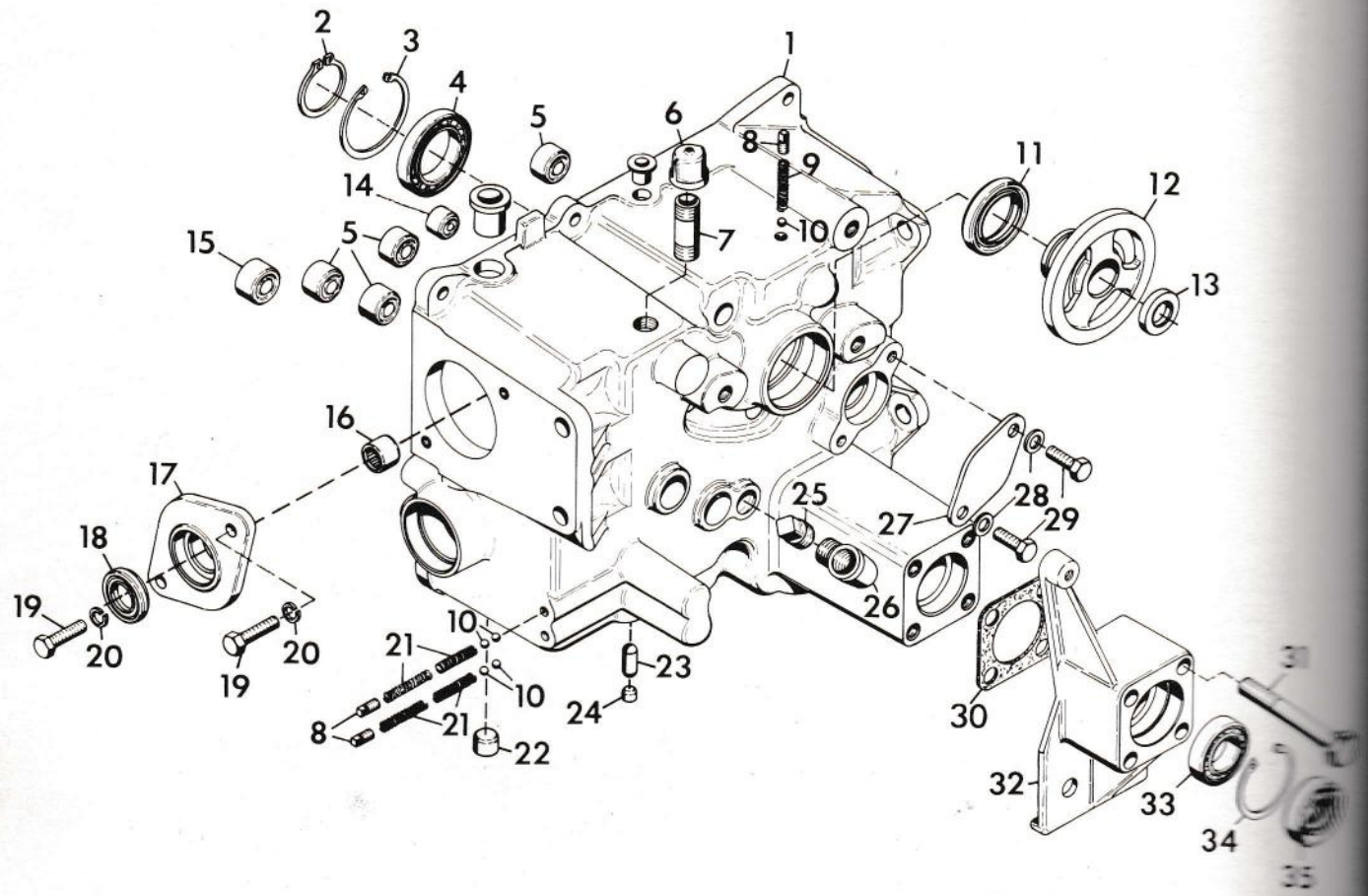
ITEM NO.	PART NO.	QTY.	DESCRIPTION
1	414075	1	Nut, Lock 5/8-11
2	33845	1	Washer, Flat .687x1.312x.122
3	17922	1	Gear, Spur PTO; 10 DP 56 Teeth x .750 Std.
4	17924	1	Spacer, 1.060x1.375x.450
5	14640	1	Assembly, Bearing 1.000x1.980x1.243
6	19538	1	Shaft, PTO
7	17923	1	Seal, Oil 1.375x2.129x.312

### NUMBER ELEVEN - FWD-REV CLUTCH ASSEMBLY

ITEM NO.	PART NO.	QTY.	DESCRIPTION
1	42482	2	Assembly, Clutch and Ring
2	44141	1	Rivet, Steel (Bag of 50)
3	40692	2	Lining, Clutch
4	42481	2	Ring, Clutch
5	42484	2	Disc, Clutch
6	35330	2	Bearing, Ball 1.574x3.149x.708
7	35681	2	Pin, Clutch Spring
8	34734	2	Trunnion, Fwd-Rev Clutch
9	121223	2	Pin, Cotter .06x.75



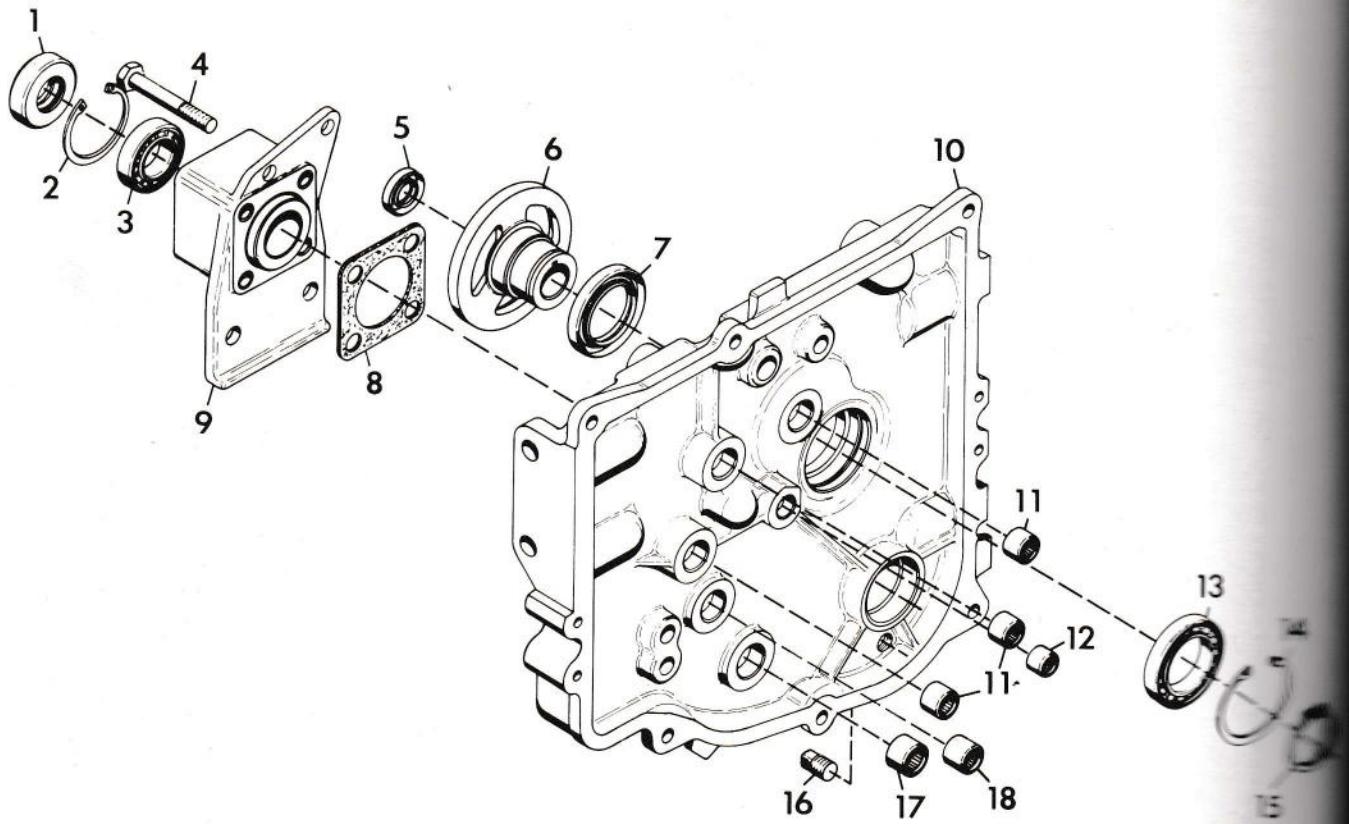
# NUMBER TWELVE - TRANSMISSION CASE ASSEMBLY



## NUMBER TWELVE - TRANSMISSION CASE ASSEMBLY

ITEM NO.	PART NO.	QTY.	DESCRIPTION
1	17910	1	Assembly, Transmission Case
2	17919	1	Ring, Retaining 1.969 Shaft
3	18872	1	Ring, Retaining 3.156 Bore
4	17915	1	Bearing, Ball 1.968x3.149x.629
5	17913	4	Bearing, Needle .75xlx.75
6	19472	1	Cap, Pipe 1/2 NPT
7	121664	1	Nipple, Pipe 1/2x2.5
8	103877	3	Plug, Pipe 1/8
9	24772	1	Spring
10	274301	5	Ball, Steel 5/16
11	17917	1	Seal, Oil 2.250x3.005x.375
12	18024	1	Hub, Clutch
13	18035	1	Seal, Oil .75xl.625x.25
14	17914	1	Bearing, Needle .625x.812x.750
15	17912	1	Bearing, Needle 1.000x1.250x.750
16	9660	1	Bearing
17	18859	1	Cap, Front PTO
18	15137	1	Seal, Oil .750x1.254x.188
19	180079	2	Bolt, Hex 5/16-18x1.00
20	120214	2	Washer, Lock 5/16 Reg.
21	17936	4	Spring, Comp. 1.50x.30x26 lb/in
22	17946	1	Plug
23	18200	1	Pin, Interlock
24	421743	1	Plug, Cup 3/8
25	103880	1	Plug, Pipe 1/2
26	108686	1	Elbow, 1/2 90 Degree Street
27	18421	1	Plate, Cover
28	120394	2	Washer, Flat .406x.812x.065
29	180120	2	Bolt, Hex 3/8-16x.750
30	18030	1	Gasket
31	180191	4	Bolt, Hex 1/2-13x3.25
32	42976	1	Retainer, Axle Bearing
33	18029	1	Bearing, Ball 1.250x2.250x.500
34	18812	1	Ring, Retaining
35	18031	2	Seal, Oil Axle

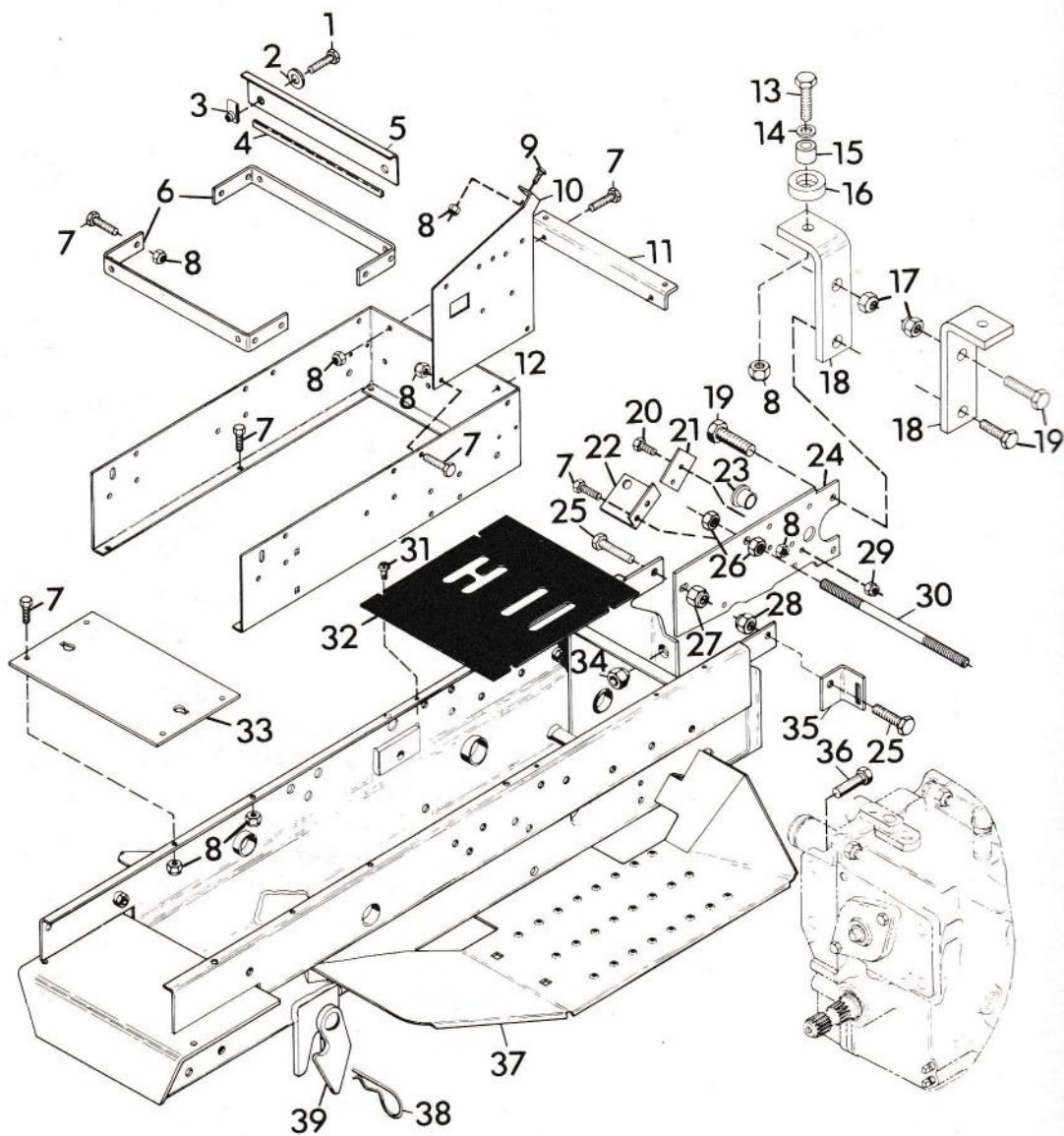
# NUMBER THIRTEEN - TRANSMISSION COVER ASSEMBLY



NUMBER THIRTEEN - TRANSMISSION COVER ASSEMBLY

ITEM NO.	PART NO.	QTY.	DESCRIPTION
1	18031	2	Seal, Oil Axle
2	18812	1	Ring, Retaining
3	18029	1	Bearing, Ball 1.250x2.250x.500
4	180191	4	Bolt, Hex 1/2-13x3.25
5	18035	1	Seal, Oil .750x1.625x.250
6	18024	1	Hub, Clutch
7	17917	1	Seal, Oil 2.250x3.005x.375
8	18030	1	Gasket
9	34740	1	Retainer, Axle Bearing
10	18022	1	Assembly, Transmission Cover
11	17913	3	Bearing, Needle .75x1x.75
12	17914	1	Bearing, Needle .625x.812x.75
13	17915	1	Bearing, Ball 1.968x3.149x.629
14	18872	1	Ring, Retaining 3.156 Bore
15	17919	1	Ring, Retaining 1.969 Shaft
16	103879	1	Plug, Pipe 3/8
17	17912	1	Bearing, Needle 1.000x1.250x.750
18	11063	1	Bearing, Needle .75x1x.75

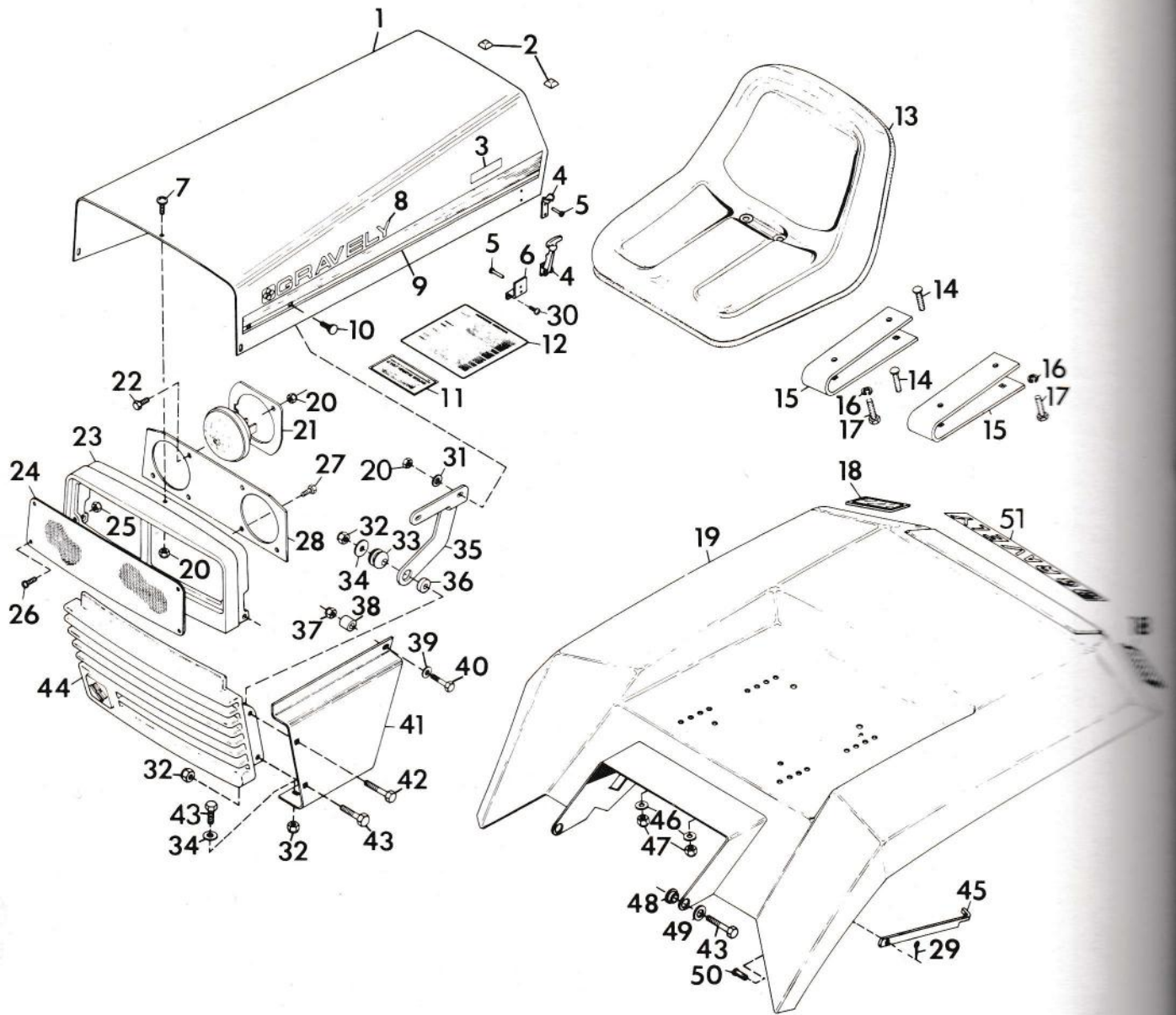
# FRAME



## FRAME

ITEM NO.	PART NO.	QTY.	DESCRIPTION
1	180021	4	Bolt, Hex 1/4-20x.875
2	120392	4	Washer, Flat .281x.625x.065
3	32369	4	Nut, Retainer
4	14897	2	Moulding
5	22421	2	Bracket, Forward Tank
6	40141	2	Bracket, Fuel Tank
7	180020	26	Bolt, Hex 1/4-20x.75
8	419454	30	Nut Lock 1/4-20
9	160541	2	Screw, Machine 1/4-20x.75 Pan Hd.
10	40449	1	Brace, Instrument Panel L.H.
	40450	1	Brace, Instrument Panel R.H.
11	40548	1	Bracket, Instrument Panel
12	41240	1	Support, Instrument Panel
13	180024	2	Bolt, Hex 1/4-20x1.25
14	120386	2	Washer, Flat .312x.734x.065
15	34723	2	Bushing, .259x.375x.25
16	24357	2	Bumper, Seat
17	435507	2	Nut, Lock 1/2-13
18	24358	2	Bracket, Rear Hitch
19	180177	4	Bolt, Hex 1/2-13x1.50
20	180077	4	Bolt, Hex 5/16-18x.75
21	40822	2	Bracket, Bushing Lock
22	40184	1	Bracket, Interlock Switch
23	10174	2	Bushing, Nylon .76x1.00x.76 Flange
24	40183	2	Plate, Fwd-Rev Mounting
25	180124	2	Bolt, Hex 3/8-16x1.25
26	120378	4	Nut, Hex 1/2-13
27	413534	1	Nut, Lock 3/8-16
28	456004	1	Nut, Lock 3/8-16
29	419455	4	Nut, Lock 5/16-18
30	40207	1	Rod, Frame Extension Brace
31	167260	4	Screw, Tapping 1/4-20x.625 Pan Hd
32	40140	1	Plate, Manual Control Cover
	39872	1	Plate, Hydraulic Control Cover
33	39839	1	Tray, Battery
34	11058	4	Nut, Rim
35	18362	1	Bracket, Fender Hold-Up
36	181700	4	Bolt, Hex 1/2-20x1.50
37	40918	1	Weldment, 4-Wheel Frame
38	10405	2	Pin, Hair
39	21087	1	Weldment, Mower Bracket R.H.
	21088	1	Weldment, Mower Bracket L.H.

# HOOD AND REAR DECK



## HOOD AND REAR DECK

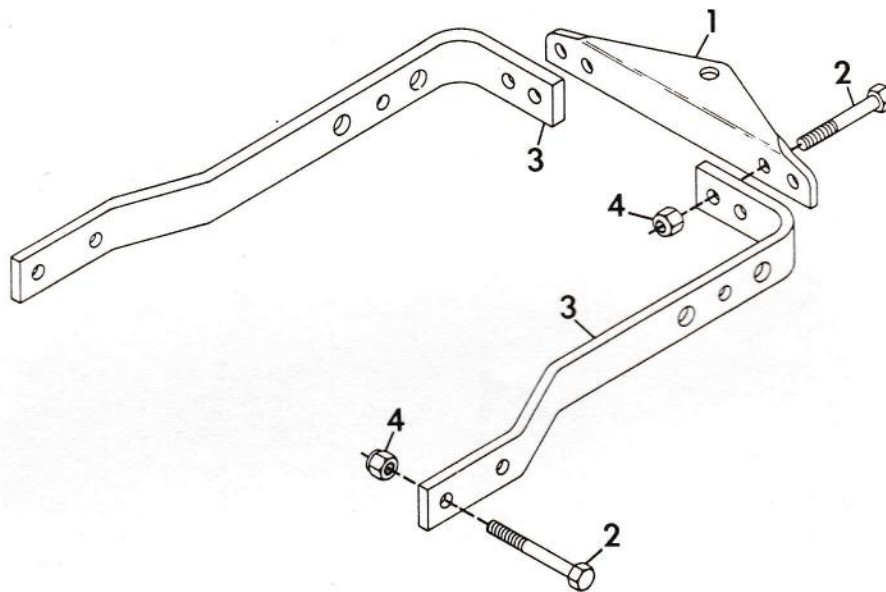
ITEM NO.	PART NO.	QTY.	DESCRIPTION
1	43802	1	Hood, Silk Screen
2	40176	2	Stop
3	43244	2	Decal, Model 12-G
	43245	2	Decal, Model 16-G
	43246	2	Decal, Model 18-G
	43247	2	Decal, Model 20-G
4	35294	2	Latch, Flexible
5	32661	6	Rivet, Dome Head
6	39828	2	Bracket, Hood Latch Mounting
7	160541	3	Screw, Machine 1/4-20 PHD
8	43003	1	Decal, Gravely Logo
9	44074	1	Decal, Side Stripe L.H. and R.H.
10	120518	4	Bolt, 1/4-20x.75 Rd Hd Sq Nk
11	11989	2	Decal, Electrical System Warning
12	40754	1	Decal, Maintenance
13	40227	1	Seat, High Back
14	126216	4	Bolt, Carriage 5/16-18x.75
15	38806	2	Spring, Seat
16	120214	4	Washer, Lock 5/16 Reg.
17	180077	4	Bolt, Hex 5/16-18x.75
18	17837	2	Reflector, Red Safety
19	40454	1 (12 HP)	Weldment, Seat Pan
	40453	1 (16, 18 and 20 HP)	Weldment, Seat Pan Notched
20	419454	11	Nut, Lock 1/4-20
21	39070	2	Ring, Headlight Retainer
22	180022	4	Bolt, Hex 1/4-20x1.00
23	38673	1	Bezel, Headlight
24	38671	1	Panel, Headlight Lense
25	190254	4	Nut, Lock 10-24
26	159947	4	Screw, Machine 10-24x.75 PHD
27	411890	2	Screw, Tapping 1/4-20x.625 HHDST
28	38672	1	Panel, Headlight Reflector
29	121223	1	Pin, Cotter .06x.75
30	163158	4	Screw, 8-18x.375 PHD CR
31	422845	4	Washer, Flat .281x.625x.065
32	456004	8	Nut, Lock 3/8-16
33	35518	2	Grommet
34	120388	6	Washer, Flat .438x1.000x.083
35	39047	1	Hinge, Hood L.H.
	39049	1	Hinge, Hood R.H.
36	36849	2	Spacer
37	419455	2	Nut, Lock 5/16-18
38	10908	2	Spacer, .375x.100x1.00
39	120393	2	Washer, Flat .344x.688x.065



## HOOD AND REAR DECK

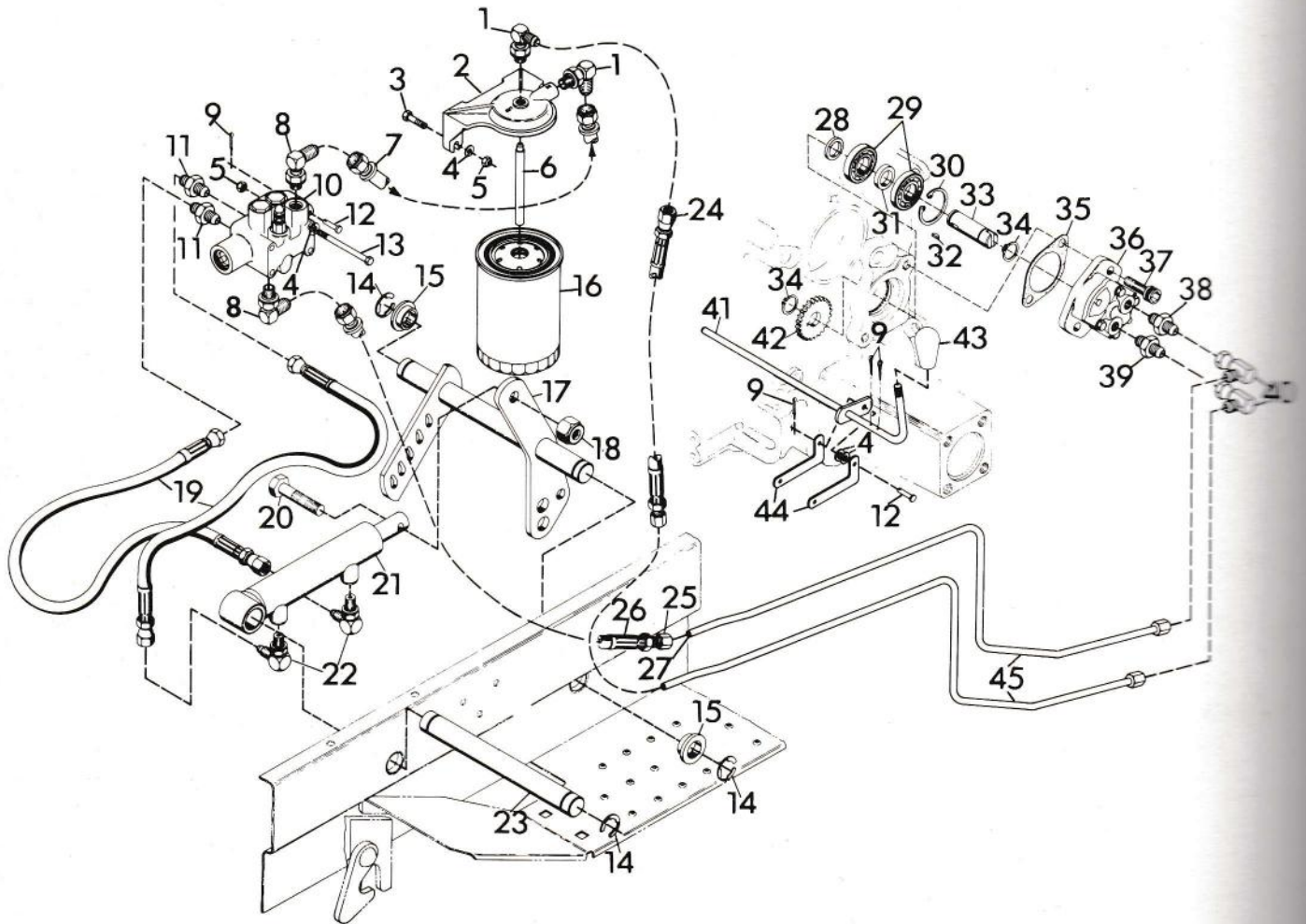
ITEM NO.	PART NO.	QTY.	DESCRIPTION
40	180085	2	Bolt, Hex 5/16-18x1.75
41	39836	1	Panel, Side L.H.
	39835	1	Panel, Side R.H.
42	180130	2	Bolt, Hex 3/8-16x2.00
43	180122	8	Bolt, Hex 3/8-16x1.00
44	39831	1	Casting, Grille
45	24996	1	Strap, Fender Hold-Up
46	446470	4	Washer, Flat .375x1.125x.065
47	413447	4	Nut, Lock 5/16-18
48	24815	2	Bushing, Rear Fender
49	120394	2	Washer, Flat .406x.812x.065
50	18420	1	Pin, Clevis .250x.406
51	24608	1 (12 HP)	Decal, Gravely Logo
	24588	1 (16, 18 and 20 HP)	Decal, Gravely Logo

# REAR HITCH



ITEM NO.	PART NO.	QTY.	DESCRIPTION
1	19517	1	Plate, Hitch
2	180179	8	Bolt, Hex 1/2-13x1.75
3	20450	2	Arm, Rear Hitch
4	435507	8	Nut, Lock 1/2-13

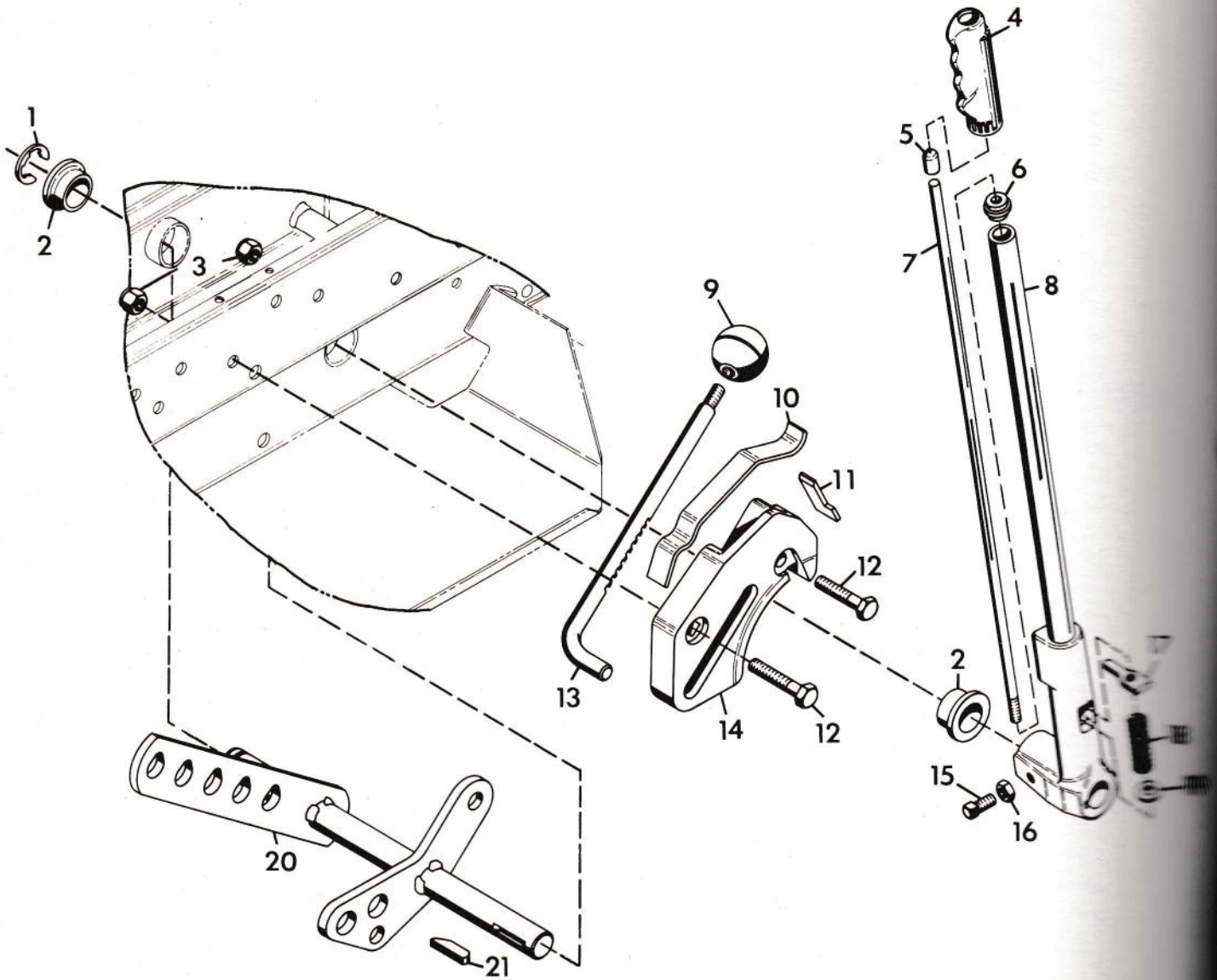
# HYDRAULIC SYSTEM



## HYDRAULIC SYSTEM

ITEM NO.	PART NO.	QTY.	DESCRIPTION
1	40723	2	Adapter
2	40259	1	Bracket, Oil Filter
3	180022	2	Bolt, Hex 1/4-20x1.00
4	120392	8	Washer, Flat .281x.625x.065
5	419454	6	Nut, Lock 1/4-20
6	40260	1	Tube, Oil Pick-Up
7	39847	1	Hose, Hydraulic Valve to Tank
8	18828	2	Adaptor (P-H #2503-6-6)
9	121222	4	Pin, Cotter .094x.75
10	18825	1	Valve, Hydraulic
11	21286	2	Adaptor (P-H #0503-4-4)
12	40970	2	Pin, Clevis
13	180050	4	Bolt, Hex 1/4-20x2.75
14	11112	4	E-Ring, 1.000 Shaft
15	18355	2	Bushing, Pivot
16	40172	1	Filter, Spin-On
17	18822	1	Weldment, Lift Lever Shaft
18	414074	1	Nut, Lock 1/2-13
19	18845	2	Hose, Hydraulic 14.5
20	180181	1	Bolt, Hex 1/2-13x2.00
21	31284	1	Cylinder, Hydraulic
22	18826	2	Adaptor (P-H #2503-4-4)
23	18830	1	Shaft, Hydraulic Cylinder
24	39849	1	Hose, Hydraulic
25	40823	2	Nut, Female Flareless
26	39848	1	Hose, Hydraulic Pump to Valve
27	40824	2	Sleeve, Female Flareless
28	18807	1	Spacer, .620x.750x.276
29	12626	2	Bearing, Ball .590x1.378x.433
30	18799	1	Ring, Retaining 1.378 Bore
31	18798	1	Spacer, .620x.750x.364
32	271089	1	Key, Woodruff .125x.375 Hard
33	18797	1	Shaft, Hydraulic Pump
34	18809	2	Ring, Retaining .594 Shaft
35	18422	1	Gasket, Cover Plate
36	18813	1	Pump, Hydraulic
37	426370	2	Screw, Cap 3/8-16 Hex Socket HD
38	23206	1	Adaptor
39	18817	1	Adaptor (P-H #0503-10-6)
40	18818	2	Adaptor (P-H #3903-6-6)
41	41239	1	Weldment, Hydraulic Control Rod
42	18808	1	Gear, Hydraulic Pump
43	32659	1	Knob, PTO
44	41237	2	Rod, Hydraulic Control
45	39838	2	Line, Hydraulic In

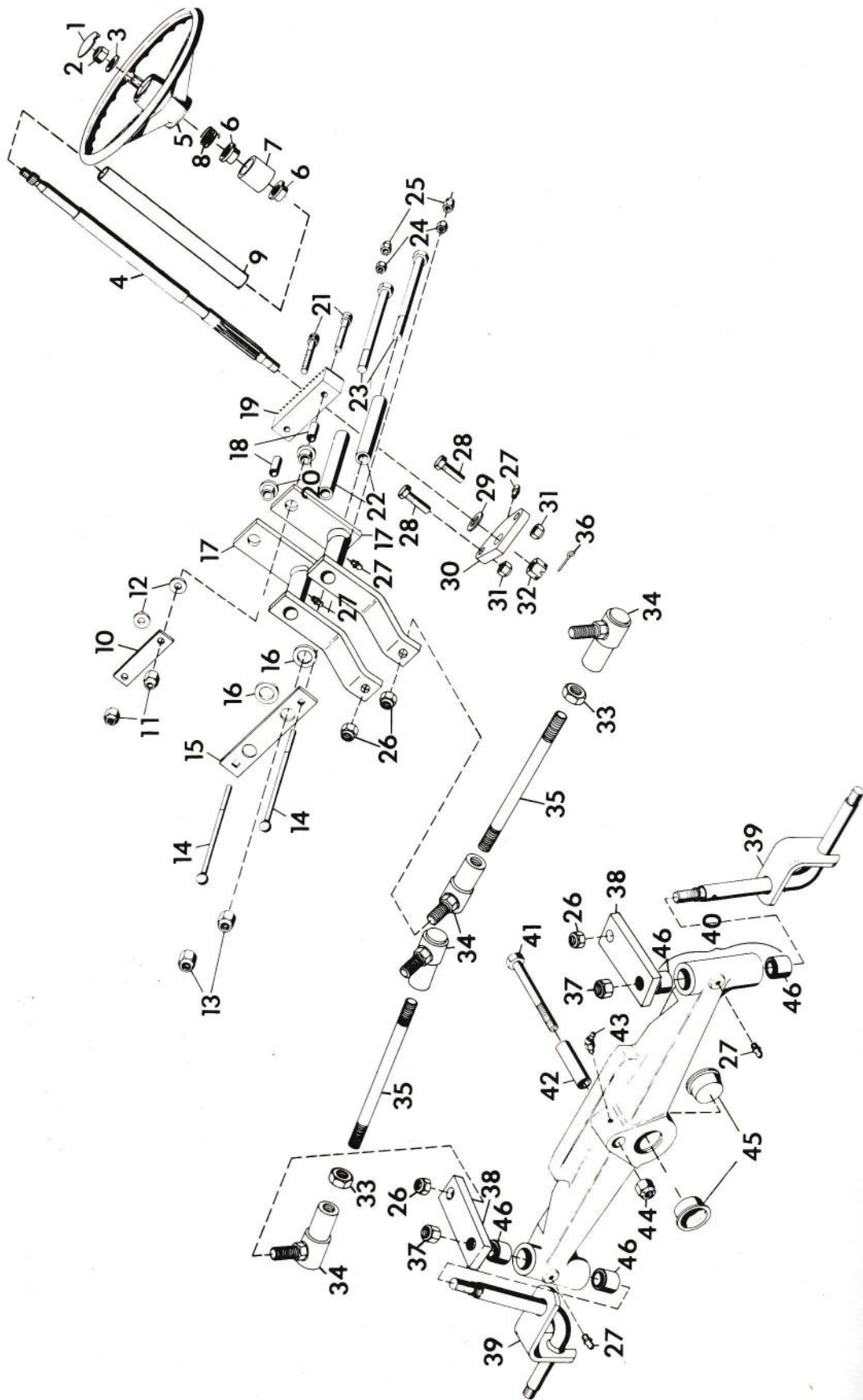
# MANUAL LIFT



# MANUAL LIFT

ITEM NO.	PART NO.	QTY.	DESCRIPTION
1	11112	1	E-Ring, 1.000 Shaft
2	18355	2	Bushing, Pivot
3	456004	2	Nut, Lock 3/8-16
4	11119	1	Grip, Flex
5	19367	1	Tip, Push Rod
6	11117	1	Guide, Push Rod
7	11118	1	Rod, Lever Push
8	11113	1	Assembly, Lever Lift
9	10670	1	Knob, Control
10	11105	1	Spring, Stop
11	11106	1	Stop, Lever
12	180124	2	Bolt, Hex 3/8-16x1.25
13	18732	1	Rod, Lever Stop
14	11103	1	Casting, Locator
15	102896	1	Screw, Set 3/8-16x1.00 SHCP
16	124829	1	Nut, Jam 3/8-16 Hex
17	11116	1	Pawl, Lever
18	10682	1	Spring, Comp. 2x.720x15.5 lb/in
19	11670	1	Washer, Special Flat .45x.99x.10
20	18404	1	Shaft, Lift Lever Weldment
21	187184	1	Key, Woodruff .250x2.125 Soft

# STEERING - 12 H.P. AND 16 H.P. UNITS

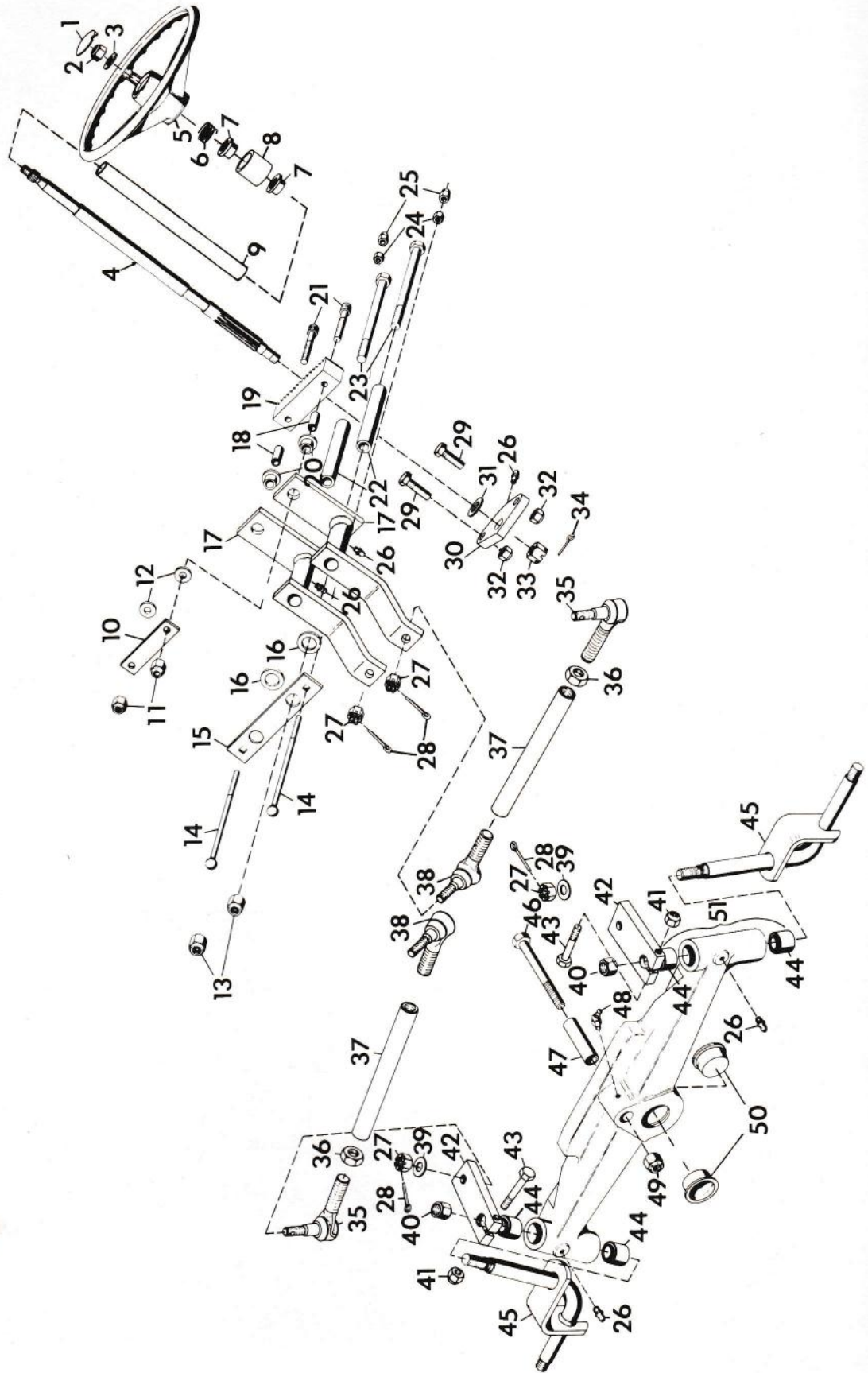


## STEERING - 12 H.P. AND 16 H.P. UNITS

ITEM NO.	PART NO.	QTY.	DESCRIPTION
1	31426	1	Cap, Steering Wheel
2	124847	1	Nut, Jam 5/8-11 Hex
3	131016	1	Washer, Flat .656x1.312x.095
4	35345	1	Shaft, Steering Wheel
5	24490	1	Wheel, Steering 8122
	31281	1	Wheel, Steering 8123 and 8163-B
6	10174	2	Bushing, Nylon .760x1.000x.600 Flange
7	40570	1	Bushing, Steering Wheel
8	20444	1	Spring, Compression 1x.80x36 Lb/In
9	40984	1	Tube, Plastic 1.0 I.D.
10	21246	1	Strap, Rack and Pinion
11	456004	2	Nut, Lock 3/8-16
12	446470	2	Washer, Flat .375x1.125x.065
13	435507	2	Nut, Lock 1/2-13
14	34074	2	Bolt, 5/16-18x5.5 Rd Hd Sq Nk
15	21079	1	Plate, Adjustment
16	14998	2	Race, Bearing Thrust .752x1.240x.095
17	40130	2	Weldment, Steering
18	21076	2	Bushing, .391x.622x.670
19	21075	1	Gear, Rack
20	21077	2	Bearing, Flange (P/M Bronze)
21	454473	2	Screw, Cap 3/8-16x2.0 Hex Socket HD
22	21078	2	Sleeve, Pivot
23	443734	2	Bolt, Hex 1/2-13x6.0
24	120376	2	Nut, Hex 5/16-18
25	419455	2	Nut, Lock 5/16-18
26	192481	4	Nut, Lock 3/8-24
27	411027	5	Fitting, Lube 1/4-28
28	180149	2	Bolt, Hex 7/16-14x1.5
29	35344	1	Race, Thrust
30	35064	1	Support, Steering Shaft
31	39413	2	Nut, Lock 7/16-14
32	121592	1	Nut, Hex 1/2-13 Slotted
33	120369	4	Nut, Hex 3/8-24
34	21084	4	Ball Joint, Steering
35	40630	2	Rod, Steering
36	121224	1	Pin, Cotter .09x1.00
37	124589	2	Nut, Hex 5/8-11
38	40126	2	Arm, Tie Rod Axle
39	18463	2	Weldment, King Pin
40	39812	1	Axle
41	271781	1	Bolt, Hex 3/4-10x4.5
42	23237	1	Tube, Axle Pivot
43	411031	1	Fitting, Lube 45 Deg.
44	456007	1	Nut, Lock 3/4-10
45	18785	2	Cap, Front Axle
46	23241	4	Bushing, .877x1.004x1.0



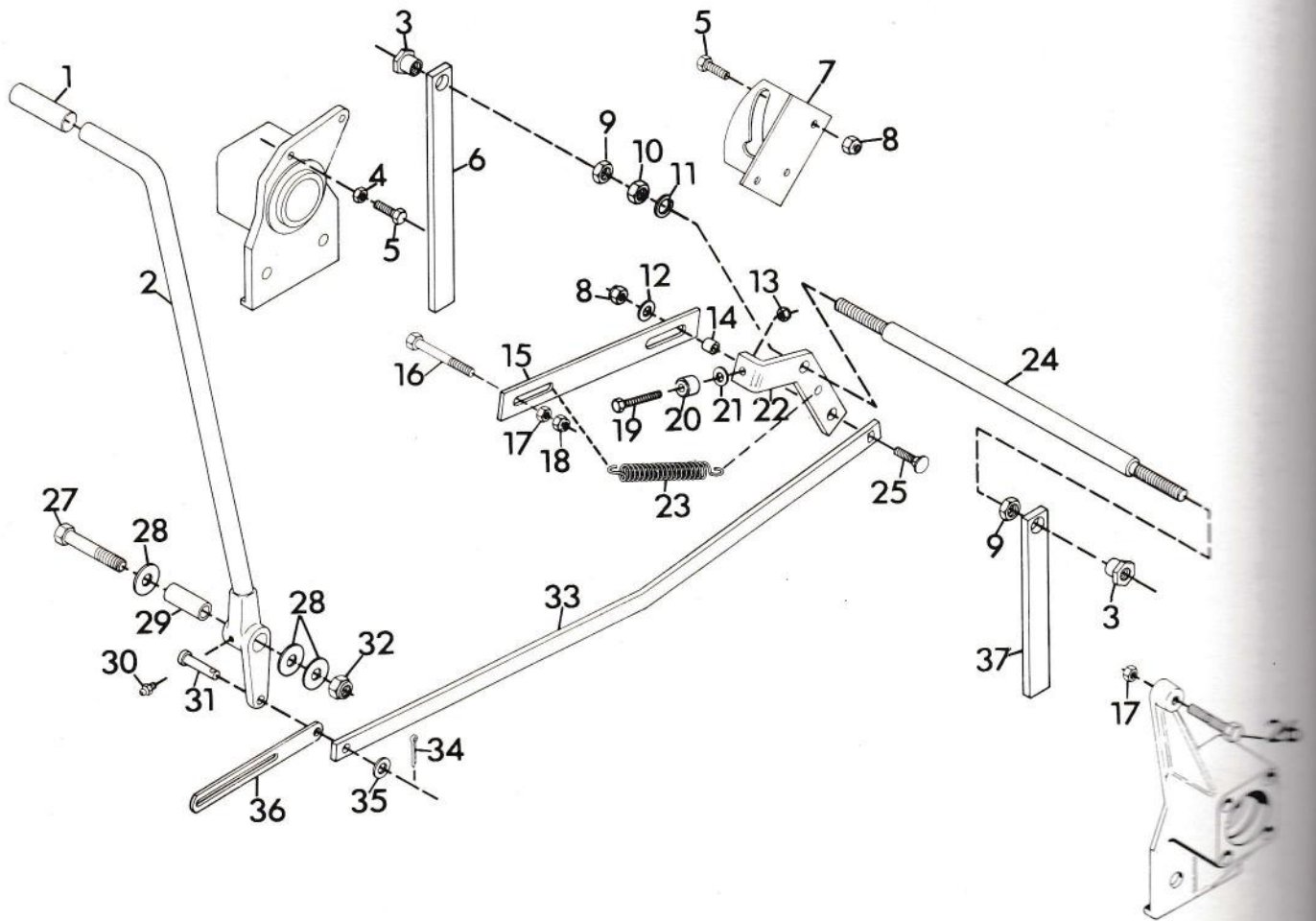
# STEERING - 18 H.P. AND 20 H.P. UNITS



## STEERING - 18 H.P. AND 20 H.P. UNITS

ITEM NO.	PART NO.	QTY.	DESCRIPTION
1	31426	1	Cap, Steering Wheel
2	124847	1	Nut, Jam 5/8-11 Hex
3	131016	1	Washer, Flat .656x1.312x.095
4	35345	1	Shaft, Steering Wheel
5	31281	1	Wheel, Steering
6	20444	1	Spring, Comp. 1.00x.80x36 lb/in
7	10174	2	Bushing, Nylon .760x1.000x.600 Flange
8	40570	1	Bushing, Steering Wheel
9	40984	1	Tube, Plastic 1.0 I.D.
10	21246	1	Strap, Rack and Pinion
11	456004	2	Nut, Lock 3/8-16
12	446470	2	Washer, Flat .375x1.125x.065
13	435507	2	Nut, Lock 1/2-13
14	34074	2	Bolt, 5/16-18x5.5 Rd Hd Sq Nk
15	21079	1	Plate, Adjustment
16	14998	2	Race, Bearing Thrust .752x1.240x.095
17	39814	2	Weldment, Steering
18	21076	2	Bushing, .391x.622x.670
19	21075	1	Gear, Rack
20	21077	2	Bearing, Flange (P/M Bronze)
21	454473	2	Screw, Cap 3/8-16x2.0 Hex Socket HD
22	21078	2	Sleeve, Pivot
23	443734	2	Bolt, Hex 1/2-13x6.0
24	120376	2	Nut, Hex 5/16-18
25	419455	2	Nut, Lock 5/16-18
26	411027	5	Fitting, Lube 1/4-28
27	125233	4	Nut, Hex Slotted 3/8-24
28	121222	4	Pin, Cotter .09x.75
29	180149	2	Bolt, Hex 7/16-14x1.5
30	35064	1	Support, Steering Shaft
31	35344	1	Race, Thrust
32	39413	2	Nut, Lock 7/16-14
33	121592	1	Nut, Hex 1/2-13 Slotted
34	121224	1	Pin, Cotter .09x1.00
35	21668	2	Assembly, Rod End
36	124934	2	Nut, Jam 1/2-20
37	40116	2	Tube, Tie Rod
38	21669	2	Assembly, Rod End
39	120388	2	Washer, Flat .438x1.000x.083
40	124589	2	Nut, Hex 5/8-11
41	190139	2	Nut, Lock 5/16-24
42	31270	2	Arm, Tie Rod Axle
43	181618	2	Bolt, Hex 5/16-24x1.75
44	23241	4	Bushing, .877x1.004x1.0
45	18463	2	Weldment, King Pin
46	271781	1	Bolt, Hex 3/4-10x4.5
47	23237	1	Tube, Axle Pivot
48	411031	1	Fitting, Lube 45 Deg.
49	456007	1	Nut, Lock 3/4-10
50	18785	2	Cap, Front Axle
51	39812	1	Axle

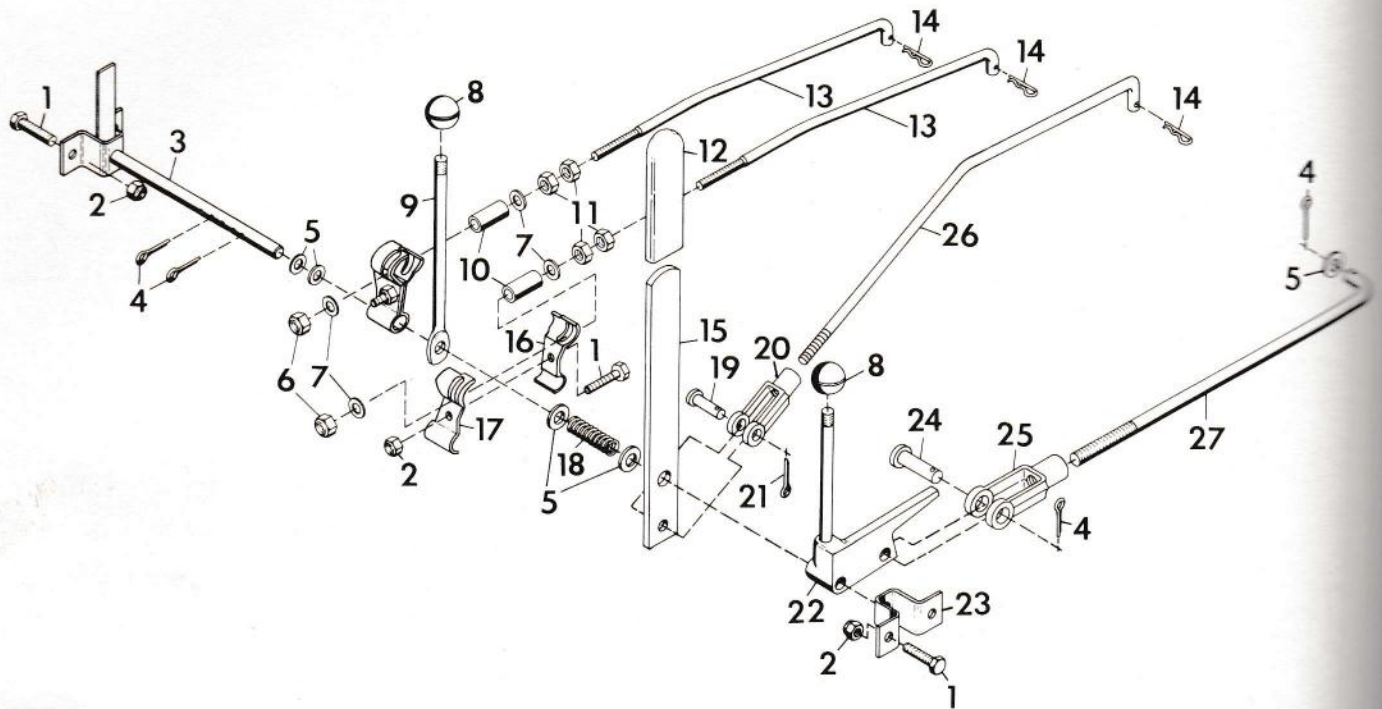
# DIRECTION CONTROL



## DIRECTION CONTROL

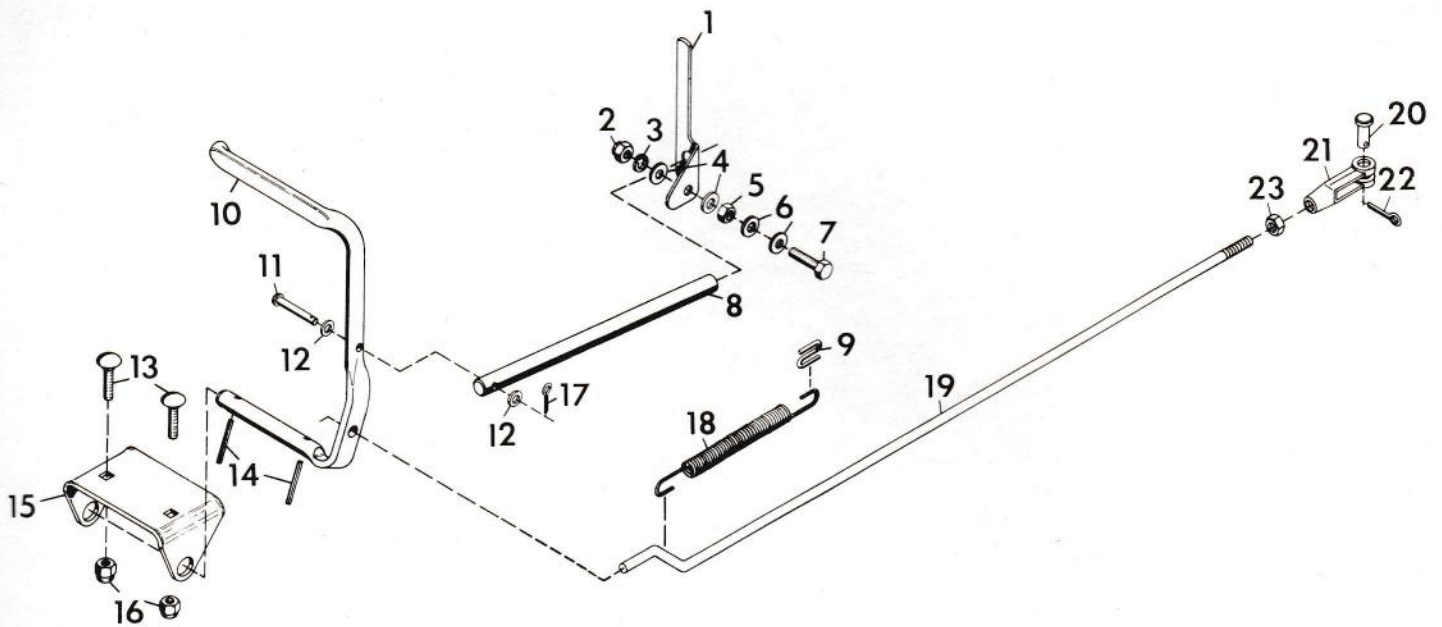
ITEM NO.	PART NO.	QTY.	DESCRIPTION
1	24452	1	Grip, Handle
2	39832	1	Lever, Fwd-Rev
3	40305	2	Bushing, Fwd-Rev Slide Rod
4	120376	1	Nut, Hex 5/16-18
5	180079	3	Bolt, Hex 5/16-18x1.00
6	34715	1	Spring, Fwd-Rev Clutch
7	39823	1	Weldment, Fwd-Rev Actuating
8	419455	3	Nut, Lock 5/16-18
9	120238	2	Nut, Jam 1/2-13 Hex
10	120378	1	Nut, Hex 1/2-13
11	131101	1	Washer, Lock 1/2 SP Heavy
12	446354	1	Washer, Flat .313x.875x.065
13	454750	1	Nut, Lock 1/4-28
14	40360	1	Bushing, Fwd-Rev Linkage
15	39843	1	Strap, Neutral Detent
16	180138	1	Bolt, Hex 3/8-16x3.00
17	120377	2	Nut, Hex 3/8-16
18	456004	1	Nut, Lock 3/8-16
19	40811	1	Bolt, Hex 1/4-28x1.38 Gr. 8
20	39842	1	Roller, Clutch Cam
21	120392	1	Washer, Flat .281x.625x.065
22	39841	1	Arm, Fwd-Rev Clutch Roll
23	39844	1	Spring, Neutral Detent
24	39840	1	Rod, Fwd-Rev Slide
25	120230	1	Bolt, 5/16-18x1.25 Rd Hd Sq Nk
26	44609	1	Bolt, Hex 3/8-16x2.50
27	180188	1	Bolt, Hex 1/2-13x2.75
28	120390	3	Washer, Flat .563x1.375x.109
29	11074	1	Bushing, .505x.74x1.438
30	411027	1	Fitting, Lube 1/4-28
31	138078	1	Pin, Clevis .375x.948
32	414074	1	Nut, Lock 1/2-13
33	39837	1	Link, Fwd-Rev Shifter
34	121222	1	Pin, Cotter .09x.75
35	120394	1	Washer, Flat .406x.812x.065
36	39867	1	Strap, Neutral Return
37	43789	1	Spring, Reverse Clutch

## TRANSMISSION CONTROLS



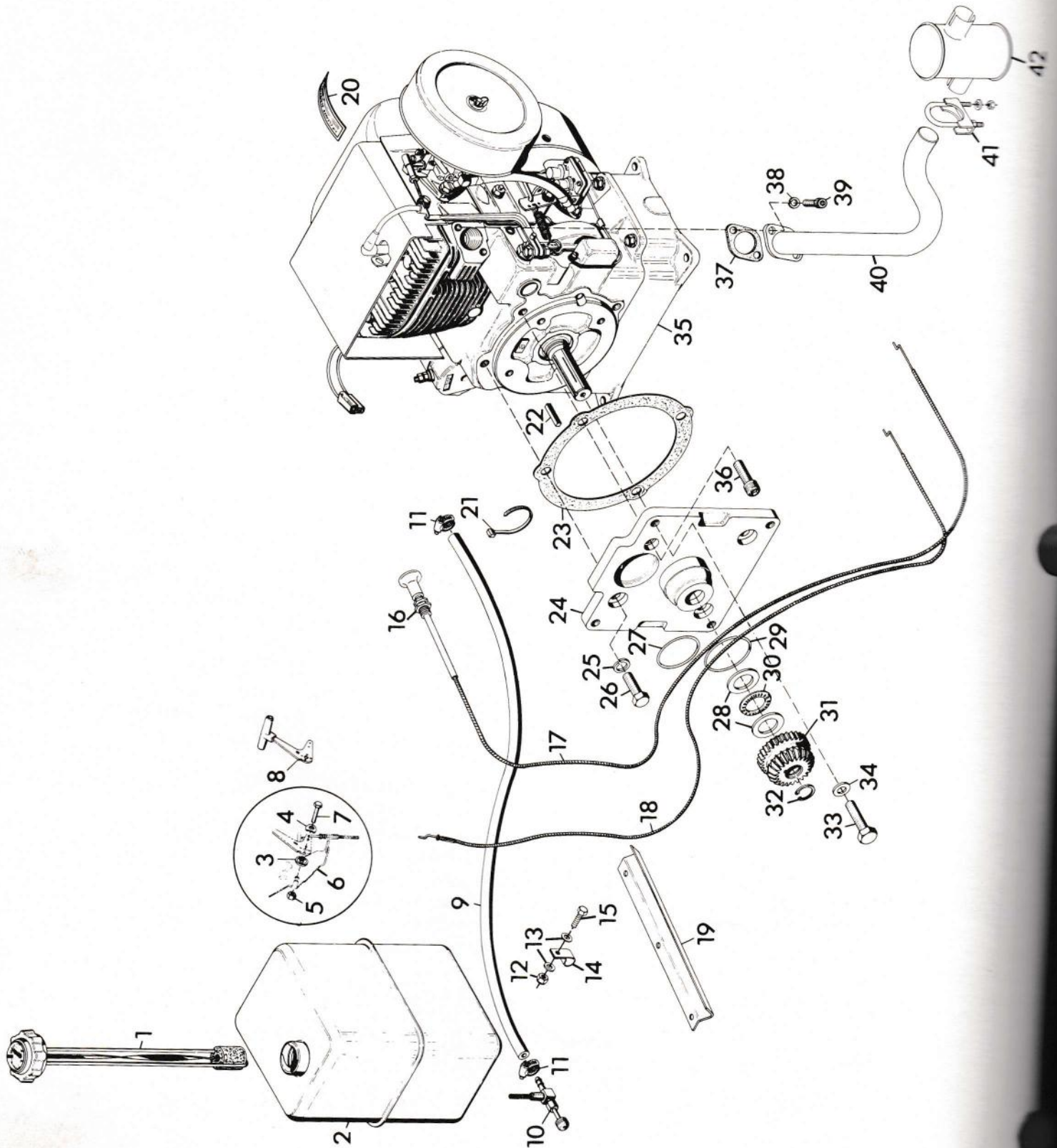
ITEM NO.	PART NO.	QTY.	DESCRIPTION
1	180077	6	Bolt, Hex 5/16-18x.75
2	419455	6	Nut, Lock 5/16-18
3	33995	1	Weldment, Cross Shaft
4	137185	4	Pin, Cotter .12x1.0
5	120396	5	Washer, Flat .531x1.06x.095
6	456004	2	Nut, Lock 3/8-16
7	120388	4	Washer, Flat .438x1.00x.083
8	10670	2	Knob, Control
9	18371	1	Lever, Shift
10	33986	2	Bushing, .400x.500x1.65
11	124829	4	Nut, Jam 3/8-16
12	34067	1	Grip, Handle
13	33994	2	Rod, Shift
14	11860	3	Pin, Cotter Hair
15	33990	1	Lever, Hi-Lo Shift
16	33988	2	Arm, Shifter R.H.
17	33989	2	Arm, Shifter L.H.
18	18372	1	Spring, Compression
19	138078	1	Pin, Clevis .375x.948
20	18380	1	Clevis, 3/8-24 Adjustable
21	121222	1	Pin, Cotter .09x.75
22	34065	1	Assembly, PTO Control
23	11096	1	Bracket, Cross Shaft
24	138086	1	Pin, Clevis .500x1.213
25	18387	1	Yoke, 1/2-20 Adjustable
26	40143	1	Rod, 2-Speed
27	18386	1	Rod, PTO

## BRAKE LINKAGE



ITEM NO.	PART NO.	QTY.	DESCRIPTION
1	20772	1	Arm, Parking Brake Lock
2	413534	1	Nut, Lock 3/8-16
3	120382	1	Washer, Lock 3/8
4	20775	2	Washer, Nylon .375x.75x.06
5	124829	1	Nut, Jam 3/8-16 Hex
6	120394	2	Washer, Flat .406x.812x.065
7	180124	1	Bolt, Hex 3/8-16x1.25
8	20773	1	Rod
9	11329	1	Clip, Spring
10	11009	1	Pedal, Brake
11	417923	1	Pin, Clevis .25x1.50
12	120392	2	Washer, Flat .281x.625x.065
13	126227	2	Bolt, Carriage 3/8-16x.75
14	454668	2	Pin, Spring .187x1.25
15	11021	1	Bracket, Brake Pedal
16	456004	2	Nut, Lock 3/8-16
17	121223	1	Pin, Cotter .06x.75
18	11263	1	Spring, Ext. 5.50x.50x20 Rate
19	40731	1	Rod, Brake
20	121741	1	Pin, Clevis 5/16x.812
21	34633	1	Yoke
22	121222	1	Pin, Cotter .09x.75
23	120368	1	Nut, Hex 5/16-24

# FUEL AND EXHAUST SYSTEM - 12 H.P. UNITS

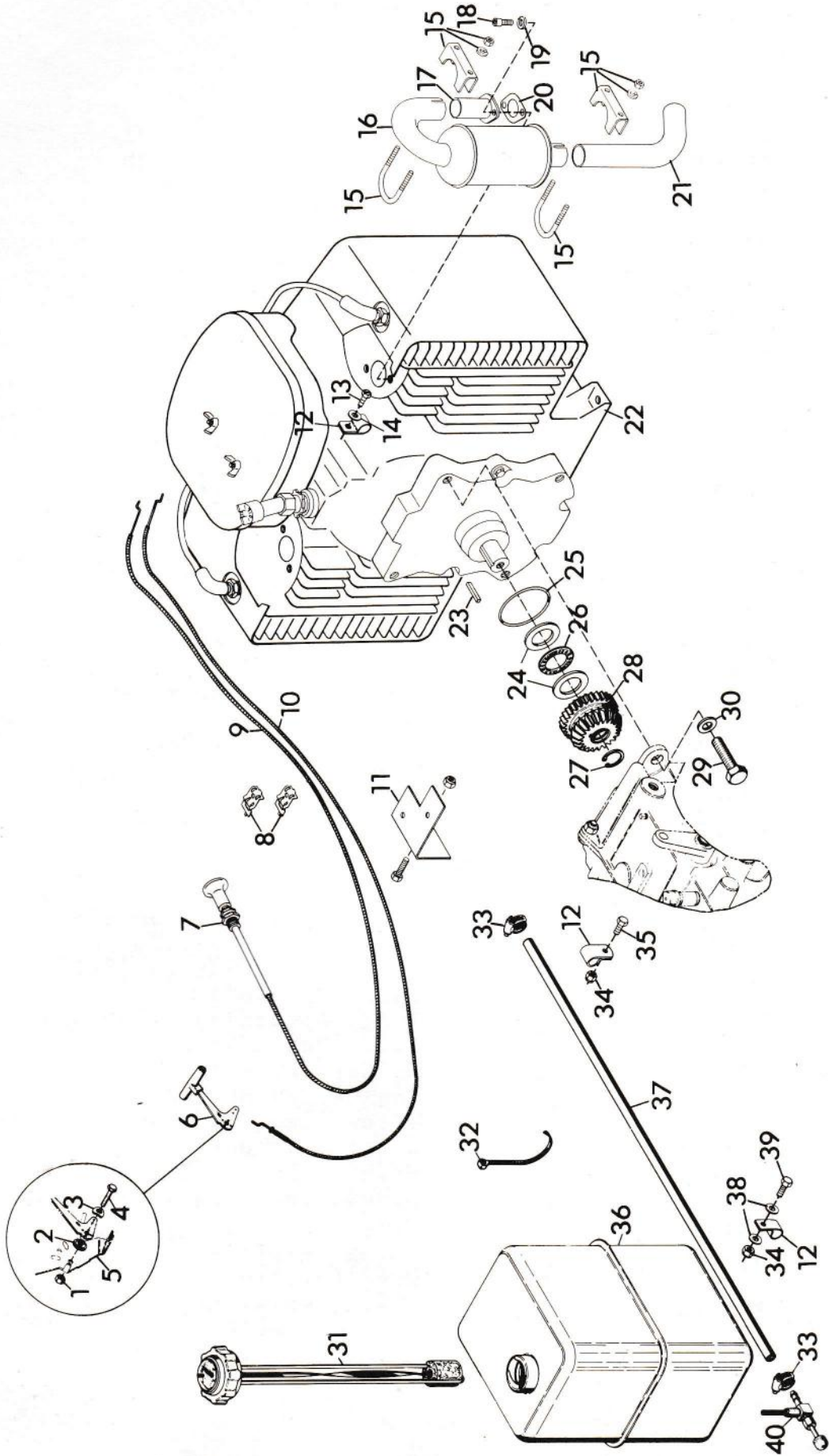


## FUEL AND EXHAUST SYSTEM - 12 H.P. UNITS

ITEM NO.	PART NO.	QTY.	DESCRIPTION
1	21415	1	Gauge, Gas
2	40620	1	Tank, Fuel
3	11772	1	Washer, Friction
4	11774	1	Washer, Spring
5	416430	1	Nut, Lock 1/4-28
6	11770	1	Bracket, Mounting
7	181566	1	Bolt, Hex 1/4-28x.75
8	11773	1	Assembly, Knob and Lever
9	21134	6 ft.	Line, Fuel
10	18563	1	Valve, Fuel 90 Deg. Reverse Flow
11	32045	2	Clamp, Hose
12	419455	1	Nut, Lock 5/16-18
13	120393	2	Washer, Flat .344x.688x.065
14	35313	1	Clamp, Nylon
15	180079	1	Bolt, Hex 5/16-18x1.00
16	124925	1	Nut, Jam 3/8-24
17	40133	1	Control, Choke
18	20565	1	Assembly, Choke Conduit
19	32030	1	Shield, Heat
20	10862	1	Decal, Air Cleaner Instruction
21	10629	6	Tie, Cable
22	18345	1	Key, Square .250x1.250
23	18340	1	Gasket, Adaptor
24	40776	1	Adaptor, Engine
25	131100	3	Washer, Lock 7/16 SP Heavy
26	180146	3	Bolt, Hex 7/16-14x1.125
27	18347	1	O-Ring, 2.500x2.750x.125
28	40758	2	Race, Bearing Thrust 1.125x1.750x.123/.126
29	18346	1	O-Ring, 3.000x3.188x.094
30	18341	1	Bearing, Thrust 1.127x1.740x.078
31	18343	1	Gear, Spur and Bevel, Input
32	18344	1	Ring, Retaining 1.125 Shaft
33	180175	4	Bolt, Hex 1/2-13x1.25
34	120384	4	Washer, Lock 1/2 Reg.
35	41233	1	Engine, 12 HP Electric 4-Wheel
36	421648	1	Screw, Cap 7/16-14x1.0 Socket Head
37	11202	1	Gasket, Exhaust
38	120214	2	Washer, Lock 5/16 Reg.
39	421705	2	Screw, Cap 5/16-18x.75 S/Hd
40	41973	1	Header, Exhaust
41	14728	1	Clamp, Muffler
42	42139	1	Muffler, Exhaust
NS	411893	2	Nut, Lock 10-32
NS	160046	2	Screw, Machine 10-32x.50 PHD



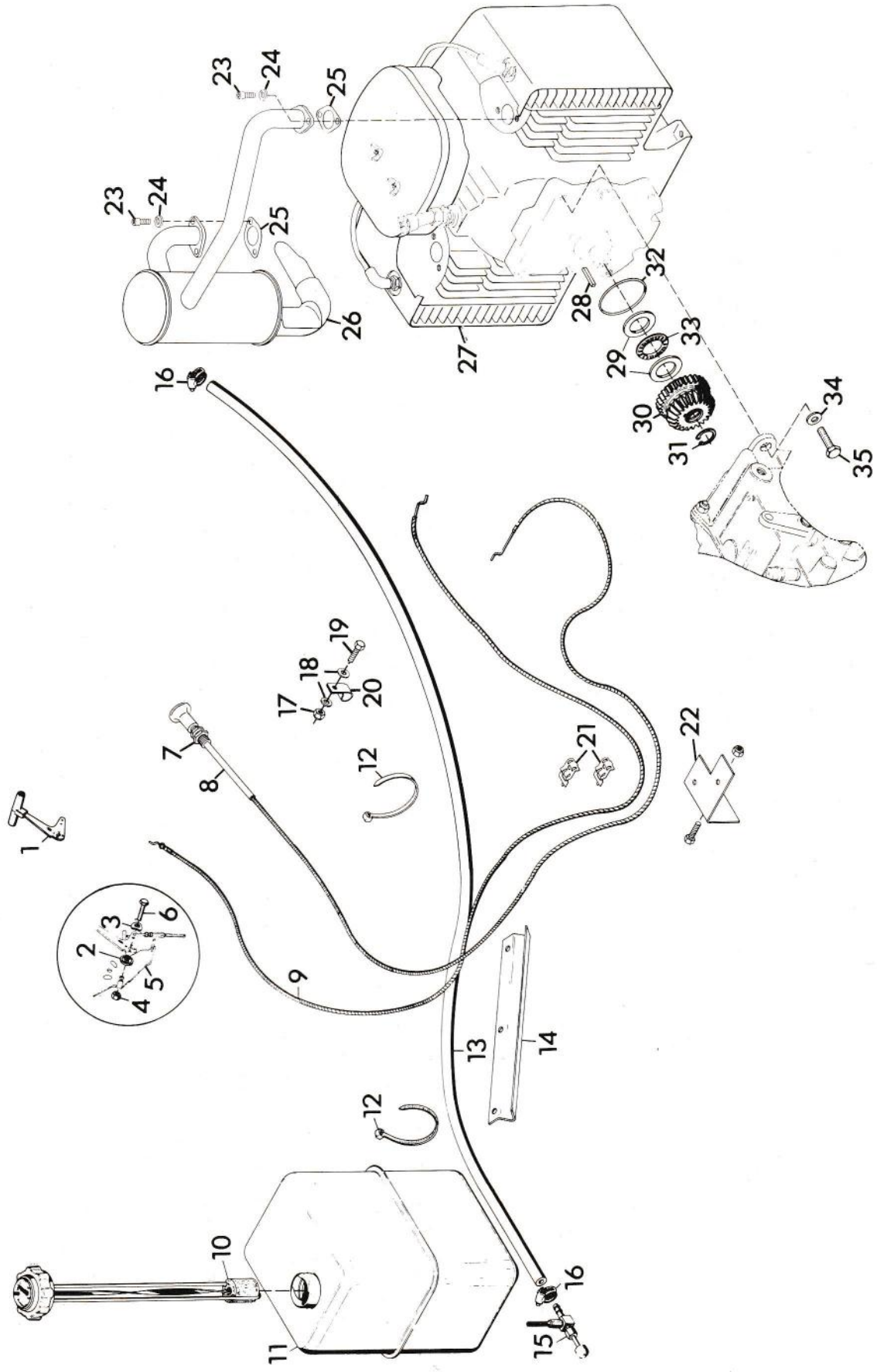
# FUEL AND EXHAUST SYSTEM - 16 H.P. UNITS



## FUEL AND EXHAUST SYSTEM - 16 H.P. UNITS

ITEM NO.	PART NO.	QTY.	DESCRIPTION
1	416430	1	Nut, Lock 1/4-28
2	11772	1	Washer, Friction
3	11774	1	Washer, Spring
4	181566	1	Bolt, Hex 1/4-28x.75
5	11770	1	Bracket, Mounting
6	11773	1	Assembly, Knob and Lever
7	124925	1	Nut, Jam 3/8-24 Hex
8	7331	2	Clip, Speed
9	39859	1	Control, Choke
10	20565	1	Assembly, Choke Conduit
11	40448	1	Bracket, Throttle and Choke
12	35313	4	Clamp, Nylon
13	411890	1	Screw, Tapping 1/4-20x.625 HHD ST
14	422845	1	Washer, Flat .281x.625x.065
15	14728	4	Clamp, Muffler
16	41958	2	Muffler
17	42123	2	Weldment, Header
18	421705	4	Screw, Cap 5/16-18x.75 S/Hd
19	120214	4	Washer, Lock 5/16-18 Reg.
20	11202	2	Gasket, Exhaust
21	41959	2	Extension, Exhaust
22	41787	1	Engine, 16 HP Magnum
23	18345	1	Key, Square .250x1.250
24	40758	2	Race, Bearing Thrust 1.125x1.750x.123/.126
25	18346	1	O-Ring, 3.000x3.188x.094
26	18341	1	Bearing, Thrust 1.127x1.740x.078
27	18344	1	Ring, Retaining 1.125 Shaft
28	18343	1	Gear, Spur and Bevel, Input
29	180179	4	Bolt, Hex 1/2-13x1.75
30	120384	4	Washer, Lock 1/2 Reg.
31	21415	1	Gauge, Gas
32	10629	7	Tie, Cable
33	32045	2	Clamp, Hose
34	419455	3	Nut, Lock 5/16-18
35	180077	1	Bolt, Hex 5/16-18x.75
36	40620	1	Tank, Fuel
37	21134	6 ft.	Line, Fuel
38	120393	4	Washer, Flat .344x.688x.065
39	180079	2	Bolt, Hex 5/16-18x1.00
40	18563	1	Valve, Fuel 90 Deg. Reverse Flow
NS	411893	2	Nut, Lock 10-32
NS	160046	2	Screw, Machine 10-32x.50 PHD

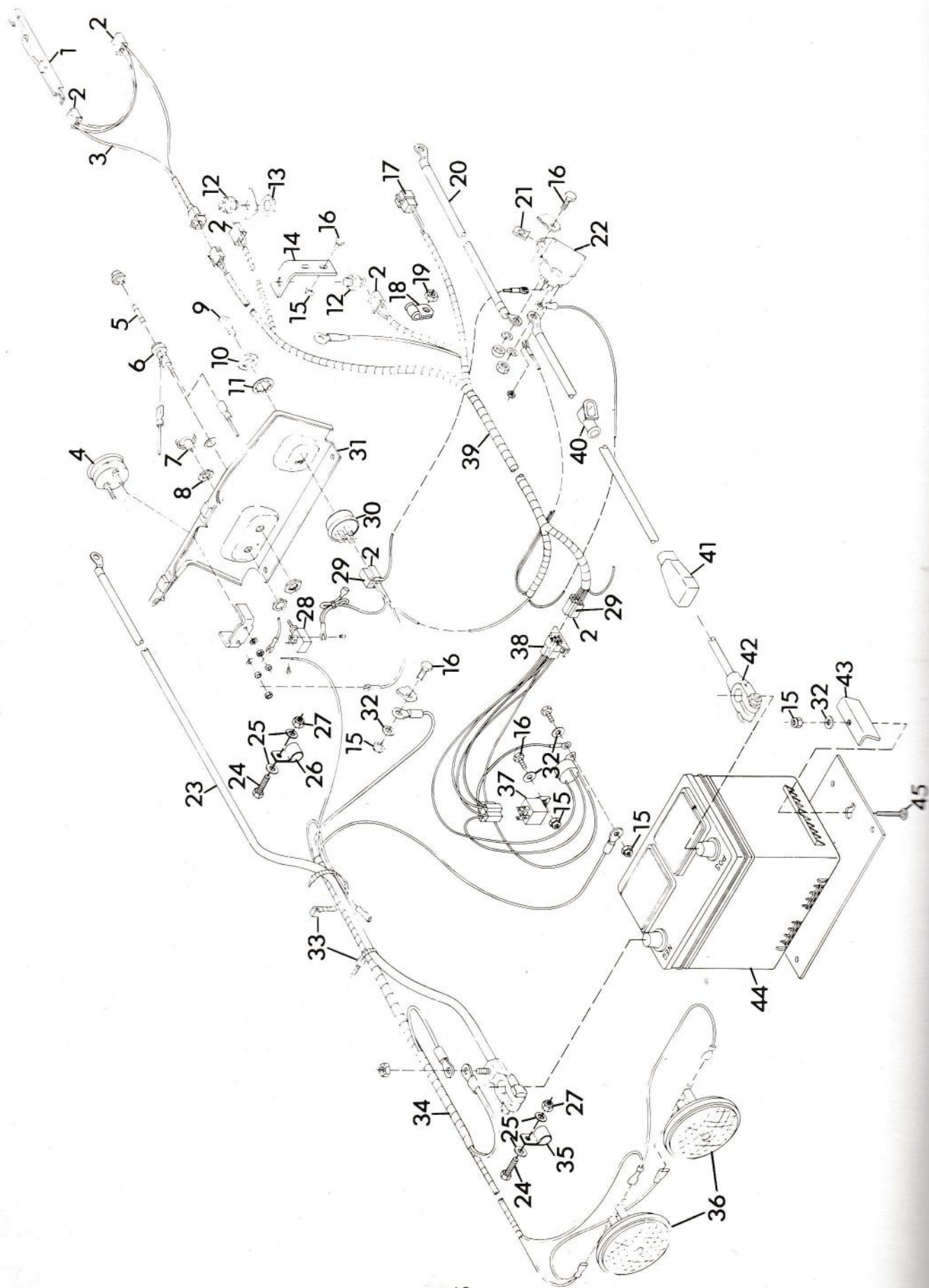
# FUEL AND EXHAUST SYSTEM - 18 H.P. AND 20 H.P. UNITS



## FUEL AND EXHAUST SYSTEM - 18 H.P. AND 20 H.P. UNITS

ITEM NO.	PART NO.	QTY.	DESCRIPTION
1	11773	1	Assembly, Knob and Lever
2	11772	1	Washer, Friction
3	11774	1	Washer, Spring
4	416430	1	Nut, Lock 1/4-28
5	11770	1	Bracket, Mounting
6	181566	1	Bolt, Hex 1/4-28x.75
7	124925	1	Nut, Jam 3/8-24 Hex
8	39859	1	Control, Choke
9	20565	1	Assembly, Choke Conduit
10	21415	1	Gauge, Gas
11	40620	1	Tank, Fuel
12	10629	6	Tie, Cable
13	21134	6 ft.	Line, Fuel
14	32030	1	Shield, Heat
15	18563	1	Valve, Fuel 90 Deg. Reverse Flow
16	32045	2	Clamp, Hose
17	419455	1	Nut, Lock 5/16-18
18	120393	2	Washer, Flat .343x.688x.065
19	180079	1	Bolt, Hex 5/16-18x1.00
20	35313	1	Clamp, Nylon
21	7331	2	Clip, Speed
22	40448	1	Bracket, Throttle and Choke
23	421705	4	Screw, Cap 5/16-18x.75 Socket HD
24	120214	4	Washer, Lock 5/16 Reg.
25	11202	2	Gasket, Exhaust
26	41892	1	Muffler, Exhaust
27	41184	1	Engine, 18 H.P.
	41188	1	Engine, 20 H.P.
28	18345	1	Key, Square .250x1.250
29	40758	2	Race, Bearing Thrust 1.125x1.750x .123/.126
30	18343	1	Gear, Spur and Bevel, Input
31	18344	1	Ring, Retaining 1.125 Shaft
32	18346	1	O-Ring, 3.000x3.188x.094
33	18341	1	Bearing, Thrust 1.127x1.740x.078
34	120384	4	Washer, Lock 1/2 Reg.
35	180179	4	Bolt, Hex 1/2-13x1.75
NS	411893	2	Nut, Lock 10-32
NS	160046	2	Screw, Machine 10-32x.50 PHD

# ELECTRICAL SYSTEM - 12 H.P. UNITS

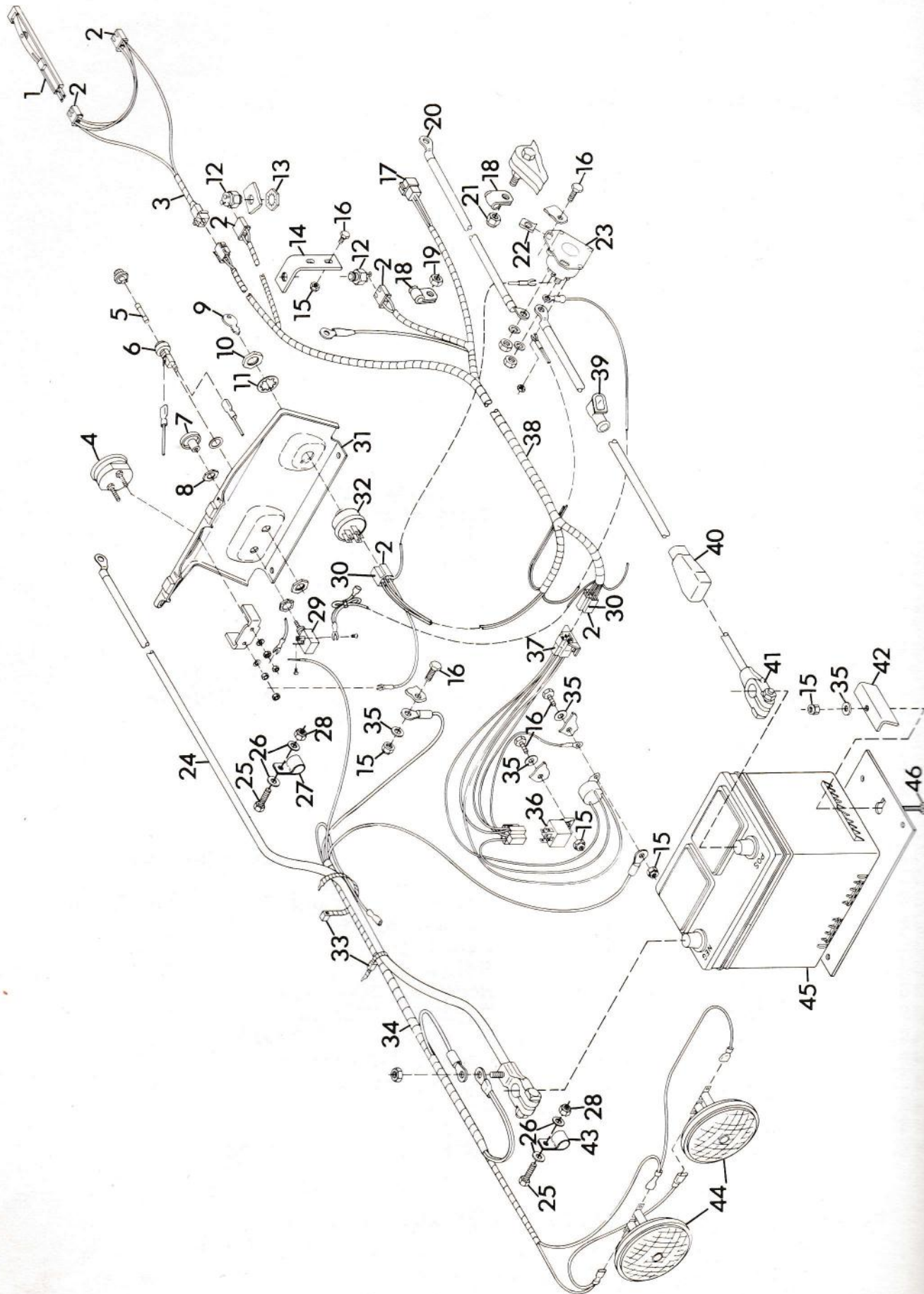


## ELECTRICAL SYSTEM - 12 H.P. UNITS

ITEM NO.	PART NO.	QTY.	DESCRIPTION
1	35062	2	Switch, Seat
2	38059	18	Terminal
3	40455	1	Harness, Wiring Seat Switch
4	21848	1	Gauge, Ammeter
5	14893	1	Fuse, 30 Amp AGC 30
6	21416	1	Fuse, Panel
7	38186	1	Knob, Light Switch
8	18587	1	Nut, Special Light Switch
9	18570	1	Key, Ignition Switch
10	19666	1	Nut, Jam 9/16-24
11	19667	1	Washer, Lock 9/16 Int. Tooth
12	20916	2	Switch, Interlock
13	107354	1	Nut, Stamped 9/16-18
14	20660	1	Bracket, Switch
15	419454	7	Nut, Lock 1/4-20
16	180020	7	Bolt, Hex 1/4-20x.75
17	42289	1	Connector
18	27122	1	Clamp
19	413534	1	Nut, Lock 3/8-16
20	40135	1	Cable, Starter
21	11676	2	Nut, Speed 1/4-20
22	35634	1	Switch, Magnetic
23	39871	1	Cable, Negative Battery
24	180079	3	Bolt, Hex 5/16-18x1.00
25	120393	6	Washer, Flat .344x.688x.065
26	41788	1	Clamp, Nylon
27	419455	3	Nut, Lock 5/16-18
28	11337	1	Switch, Light
29	38058	2	Connector
30	19223	1	Switch, Ignition
31	43799	1	Panel, Instrument
32	120392	5	Washer, Flat .281x.625x.065
33	10629	6	Tie, Cable
34	40456	1	Harness, Wiring Ground and Light
35	35313	2	Clamp, Nylon
36	39069	2	Headlight
37	40216	1	Relay
38	40313	1	Module, Time Delay
39	41865	1	Harness, Wiring
40	33847	3	Boot, Battery Cable
41	34466	1	Cover, Battery Terminal
42	39861	1	Cable, Battery to Magnetic Switch
43	37742	2	Clamp
44	42597	1	Battery, 12 Volt
45	126342	2	Bolt, 1/4-20x1.75 Rd Hd Sq Nk

NOTE: See the Operator's Manual for Wiring Diagram.

# ELECTRICAL SYSTEM - 16 H.P. UNITS



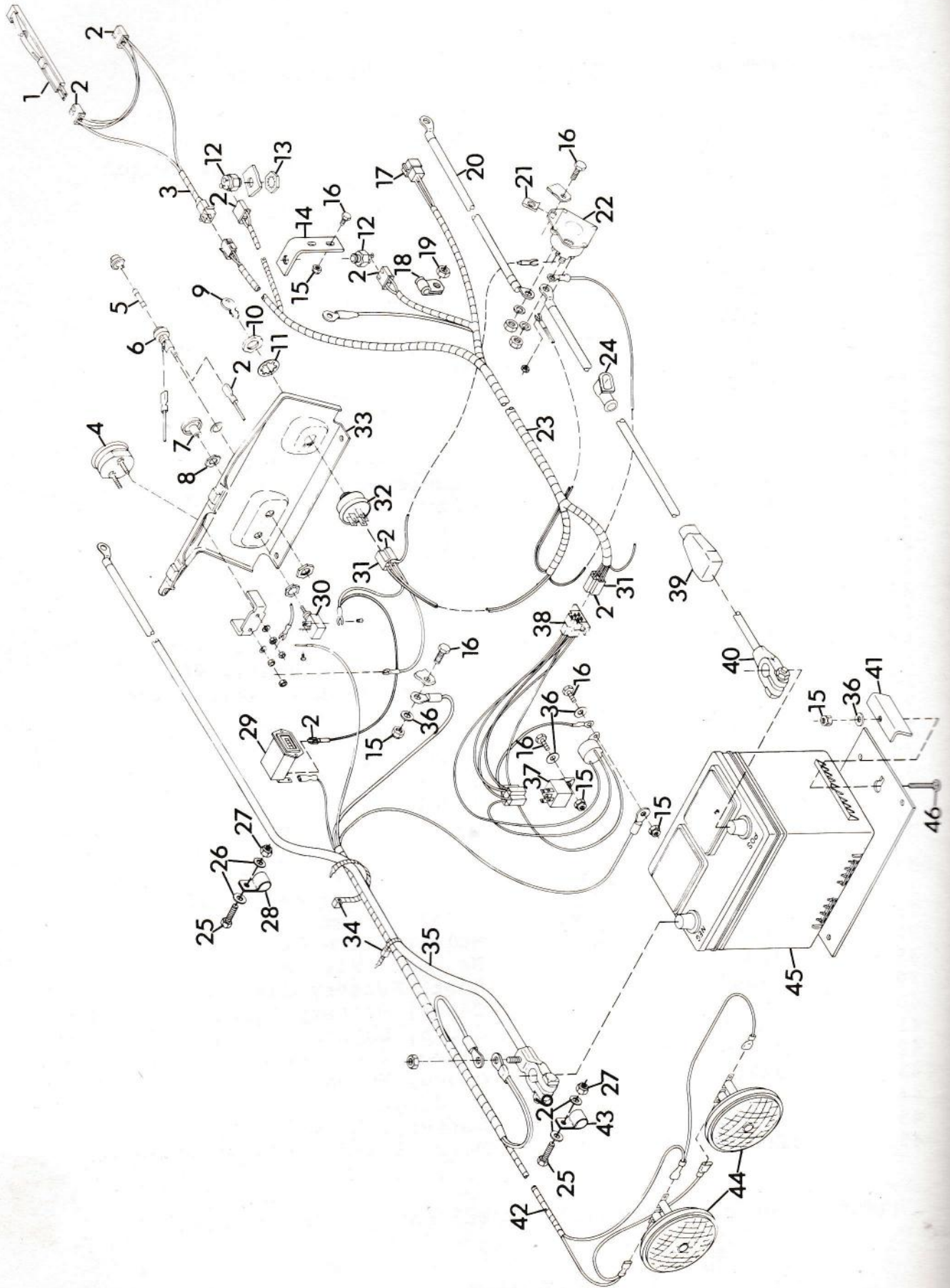
## ELECTRICAL SYSTEM - 16 H.P. UNITS

ITEM NO.	PART NO.	QTY.	DESCRIPTION
1	35062	2	Switch, Seat
2	38059	18	Terminal
3	40455	1	Harness, Wiring Seat Switch
4	21848	1	Gauge, Ammeter
5	14893	1	Fuse, 30 Amp AGC 30
6	21416	1	Fuse, Panel
7	38186	1	Knob, Light Switch
8	18587	1	Nut, Special Light Switch
9	18570	1	Key, Ignition Switch
10	19666	1	Nut, Jam 9/16-24
11	19667	1	Washer, Lock Int. Tooth
12	20916	2	Switch, Interlock
13	107354	1	Nut, Stamped 9/16-18
14	20660	1	Bracket, Switch
15	419454	7	Nut, Lock 1/4-20
16	180020	7	Bolt, Hex 1/4-20x.75
17	42289	1	Connector
18	27122	2	Clamp
19	413534	1	Nut, Lock 3/8-16
20	39862	1	Cable, Starter
21	456004	1	Nut, Lock 3/8-16
22	11676	2	Nut, Speed 1/4-20
23	35634	1	Switch, Magnetic
24	39871	1	Cable, Negative Battery
25	180079	3	Bolt, Hex 5/16-18x1.00
26	120393	6	Washer, Flat .344x.688x.065
27	41788	1	Clamp, Nylon
28	419455	3	Nut, Lock 5/16-18
29	11337	1	Switch, Light
30	38058	2	Connector
31	43799	1	Panel, Instrument
32	19223	1	Switch, Ignition
33	10629	6	Tie, Cable
34	40456	1	Harness, Wiring Ground and Lights
35	120392	5	Washer, Flat .281x.625x.065
36	40216	1	Relay
37	40313	1	Module, Time Delay
38	41865	1	Harness, Wiring
39	33847	3	Boot, Battery Cable
40	34466	1	Cover, Battery Terminal
41	39861	1	Cable, Battery to Magnetic Switch
42	37742	2	Clamp
43	35313	2	Clamp, Nylon
44	39069	2	Headlight
45	42597	1	Battery, 12 Volt
46	126342	2	Bolt, 1/4-20x1.75 Rd Hd Sq Nk

NOTE: See the Operator's Manual for Wiring Diagram.



# ELECTRICAL SYSTEM - 18 H.P. AND 20 H.P. UNITS

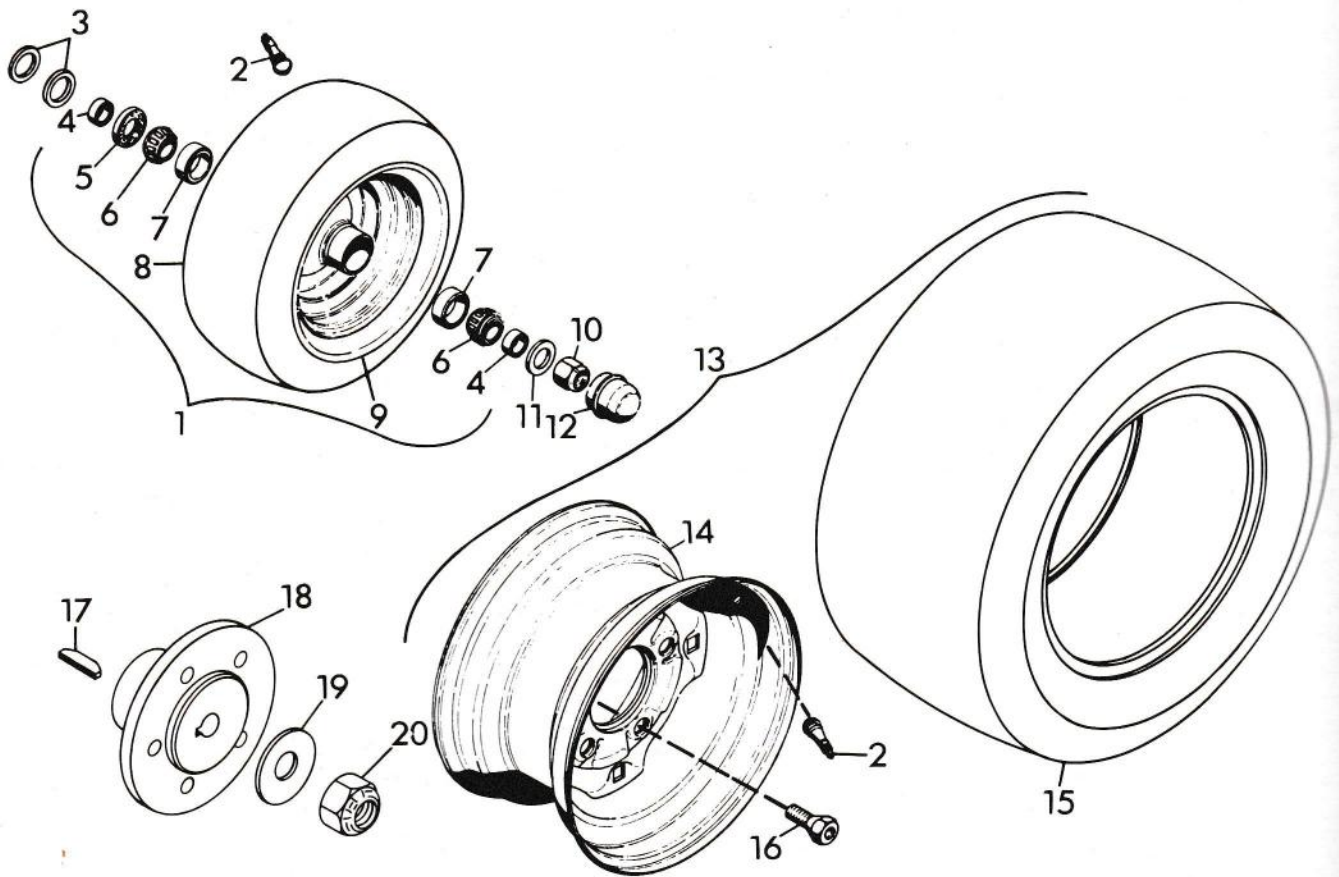


## ELECTRICAL SYSTEM - 18 H.P. AND 20 H.P. UNITS

ITEM NO.	PART NO.	QTY.	DESCRIPTION
1	35062	2	Switch, Seat
2	38059	18	Terminal
3	40455	1	Harness, Wiring Seat Switch
4	21848	1	Gauge, Ammeter
5	14893	1	Fuse, 30 Amp AGC-30
6	21416	1	Fuse, Panel
7	38186	1	Knob, Light Switch
8	18587	1	Nut, Special Light Switch
9	18570	1	Key, Ignition Switch
10	19666	1	Nut, Jam 9/16-24
11	19667	1	Washer, Lock 9/16 Int. Tooth
12	20916	2	Switch, Interlock
13	107354	1	Nut, Stamped 9/16-18
14	20660	1	Bracket, Switch
15	419454	7	Nut, Lock 1/4-20
16	180020	7	Bolt, Hex 1/4-20x.75
17	42289	1	Connector
18	27122	1	Clamp
19	413534	1	Nut, Lock 3/8-16
20	39862	1	Cable, Starter
21	11676	2	Nut, Speed 1/4-20
22	35634	1	Switch, Magnetic
23	41865	1	Harness, Wiring
24	33847	3	Boot, Battery Cable
25	180079	3	Bolt, Hex 5/16-18x1.00
26	120393	6	Washer, Flat .344x.688x.065
27	419455	3	Nut, Lock 5/16-18
28	41788	1	Clamp, Nylon
29	38256	1	Hourmeter
30	11337	1	Switch, Light
31	38058	2	Connector
32	19223	1	Switch, Ignition
33	43799	1	Panel, Instrument
34	10629	6	Tie, Cable
35	39871	1	Cable, Negative Battery
36	120392	5	Washer, Flat .281x.625x.065
37	40216	1	Relay
38	40313	1	Module, Time Delay
39	34466	1	Cover, Battery Terminal
40	39861	1	Cable, Battery to Magnetic Switch
41	37742	2	Clamp
42	40456	1	Harness, Wiring Ground and Lights
43	35313	2	Clamp, Nylon
44	39069	2	Headlight
45	42597	1	Battery, 12 Volt
46	126342	2	Bolt, 1/4-20x1.75 Rd Hd Sq Nk

NOTE: See the Operator's Manual for Wiring Diagram.

# FRONT AND REAR WHEELS



## FRONT AND REAR WHEELS

ITEM NO.	PART NO.	QTY.	DESCRIPTION
1	18442	2	Assembly, Front Wheel 16x6.50-8
	31425	2	Assembly, Front Wheel 16x7.50-8
2	11191	2	Assembly, Valve Stem
3	423315	4	Washer, Flat .813x1.37x.100
4	18448	2	Spacer
5	18447	1	Seal, Oil
6	18446	2	Bearing, Cone LM 11949
7	18445	2	Bearing, Cup LM 11910
8	11190	1	Tire, Front 16x6.50-8
	31280	1	Tire, Front 16x7.50-8
9	18443	1	Rim, Front Wheel Assembly
10	418692	2	Nut, Lock 5/8-11
11	131016	2	Washer, Flat .656x1.312x.095
12	18449	2	Cap
13	11705	2	Assembly, Rear Wheel 23x8.50-12
	21499	1	Assembly, Wheel R.H. 23x8.5-12 SGT
	22216	1	Assembly, Wheel L.H. 23x8.5-12 SGT
	31424	2	Assembly, Rear Wheel 23x10.50-12
14	11195	1	Rim, Weldment
15	11194	1	Tire, Rear 23x8.50-12
	21500	1	Tire, Super Terra 23x8.50-12
	31278	1	Tire, Rear 23x10.50-12
16	12744	10	Bolt, Hub 7/16-20x.75 (Special)
17	187184	2	Key, Woodruff .250x2.125 Soft
18	40304	2	Hub, Tapered 4-Wheel
19	131000	2	Washer, Flat .813x2.0x.148
20	456007	2	Nut, Lock 3/4-10